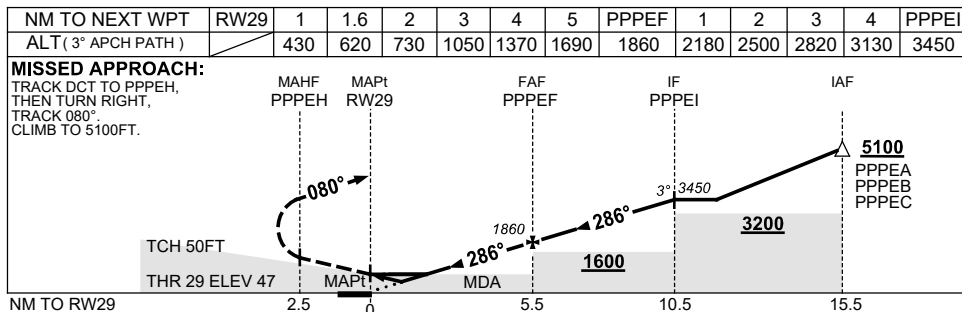
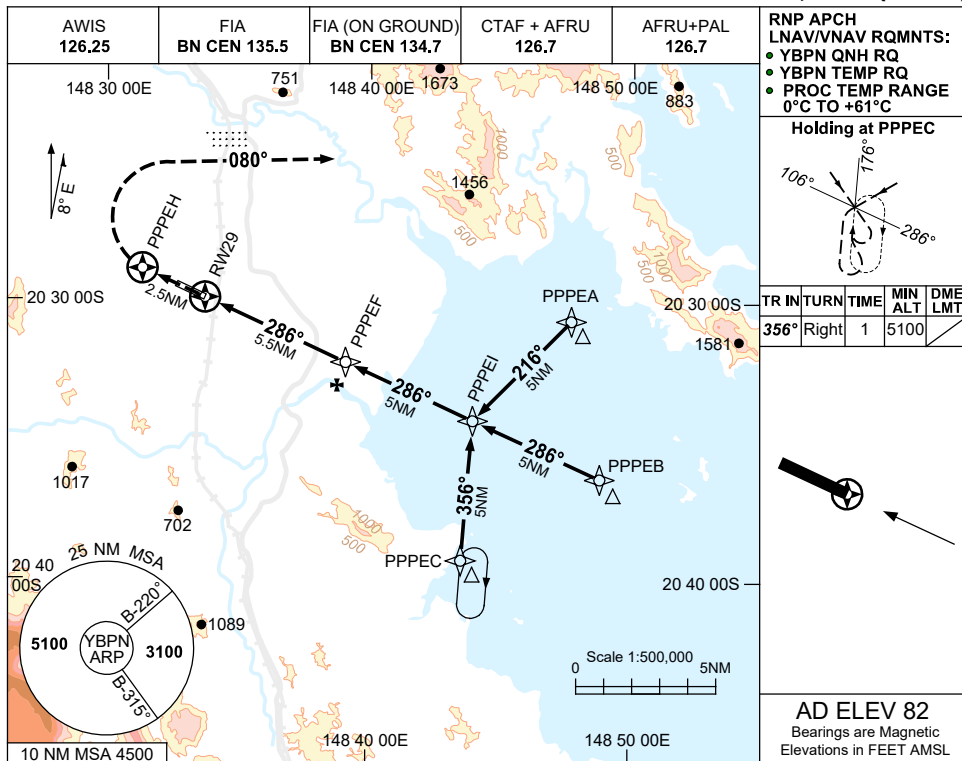


USE QNH

RNP RWY 29

24 MAR 2022

**PROSERPINE/WHITSUNDAY COAST, QLD (YBPN)**



**NOTES**

CATEGORY	A	B	C	D
LNAV/VNAV		<b>430</b> (383-2.1)		
LNAV		<b>620</b> (573-3.3)		
CIRCLING	<b>800</b> (718-2.4)		<b>1030</b> (948-4.0)	<b>1420</b> (1338-5.0)
ALTERNATE	(1218-4.4)		(1448-6.0)	(1838-7.0)

1. MAX IAS: INITIAL : 210KT.
2. COLOUR: SEE SPEC NOTICES.

Changes: CHART TITLE, PBN SPECIFICATION BOX.

BPNGN01-170