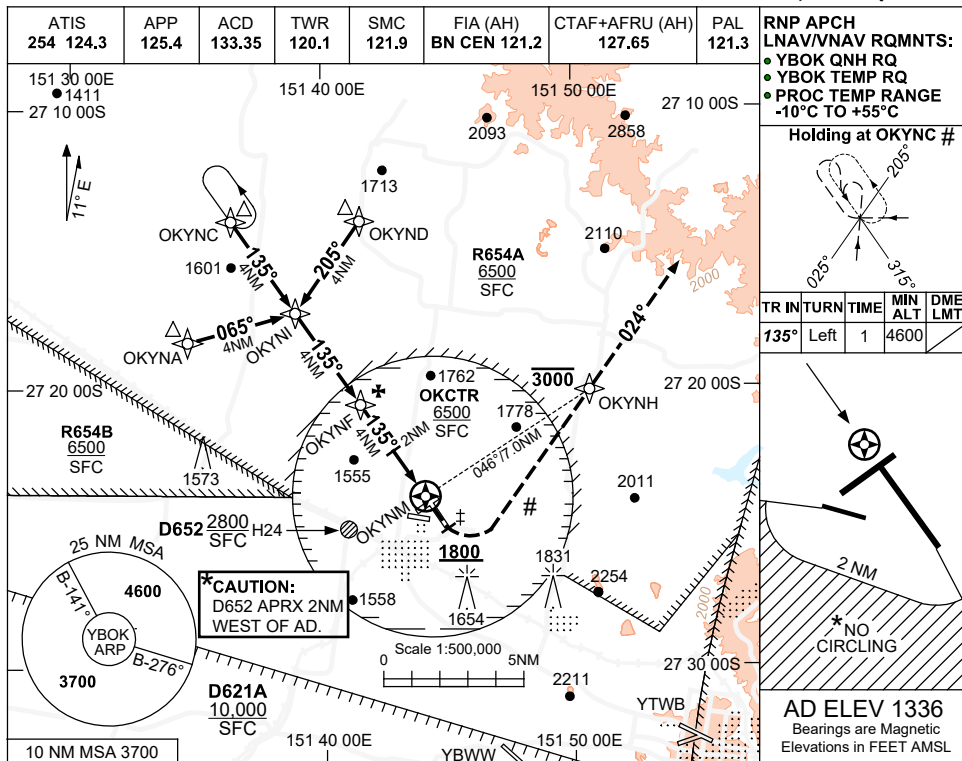
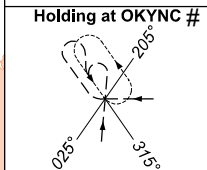


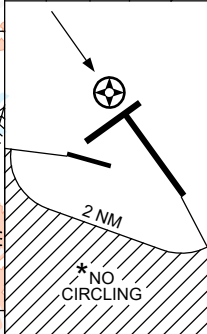
16 JUN 2022



RNP APCH LNAV/VNAV RQMNTS:
 • YBOK QNH RQ
 • YBOK TEMP RQ
 • PROC TEMP RANGE -10°C TO +55°C

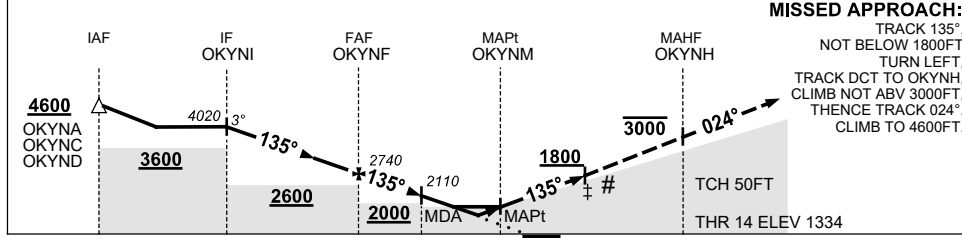


TR IN	TURN	TIME	MIN ALT	DME LMT
135°	Left	1	4600	



AD ELEV 1336
 Bearings are Magnetic
 Elevations in FEET AMSL

NM TO NEXT WPT	OKYNI	3	2	1	OKYNF	3	2	1.2	0.6	OKYNM
ALT (3° APCH PATH)	4020	3700	3380	3060	2740	2430	2110	1860	1670	



MISSED APPROACH:
 TRACK 135°, NOT BELOW 1800FT TURN LEFT, TRACK DCT TO OKYNH, CLIMB NOT ABV 3000FT, THENCE TRACK 024°, CLIMB TO 4600FT.

NOTES
 1. MAX IAS: INITIAL : 200KT. ‡ MAP TURN: 180KT.
 2. CAUTION: YTWB RNP RWY 11 NPA OVERLIES THIS PROCEDURE.
 3. NO CIRCLING SW OF RWY 09/27 AND RWY 14/32 BEYOND 2NM.
 4. PROC MAY NOT BE CONTAINED IN CTA.

CATEGORY	A	B	C	D
LNAV/VNAV		1670 (336-1.9)		NOT APPLICABLE
LNAV		1860 (524-3.0)		
CIRCLING *	2170 (834-2.4)		2470 (1134-4.0)	
ALTERNATE	(1334-4.4)		(1634-6.0)	

Changes: OK CTR, R654A AND R654B. BOKGN01-171