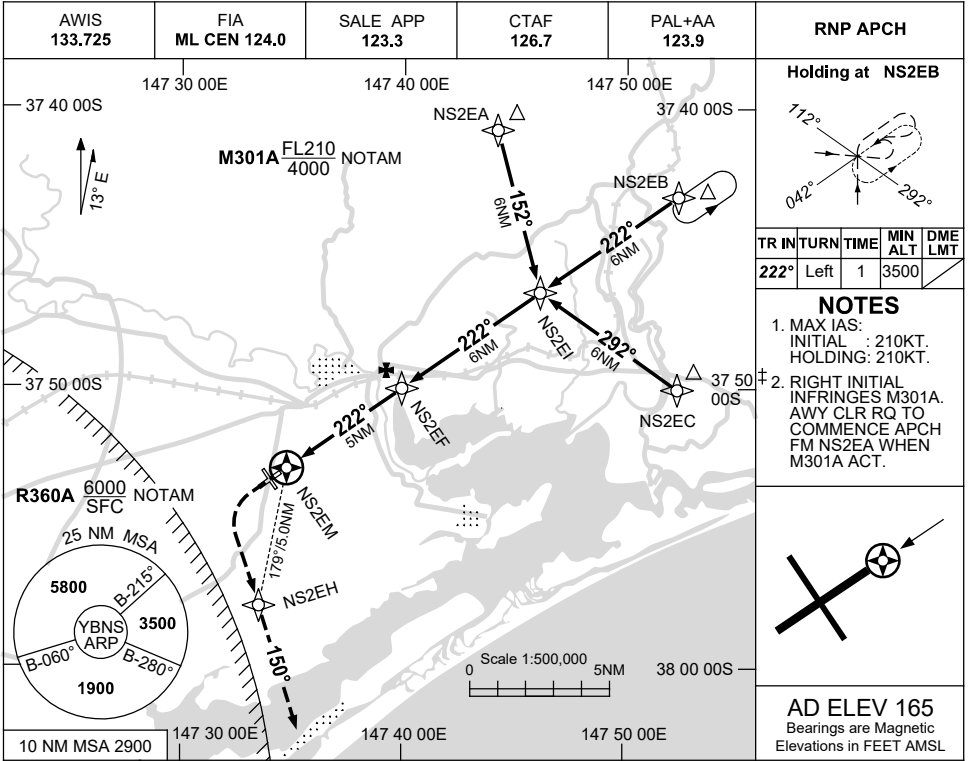


USE QNH

RNP RWY 22

BAIRNSDALE, VIC (YBNS)

21 MAR 2024

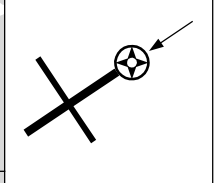


Holding at NS2EB

TR	IN TURN	TIME	MIN ALT	DME LMT
222°	Left	1	3500	

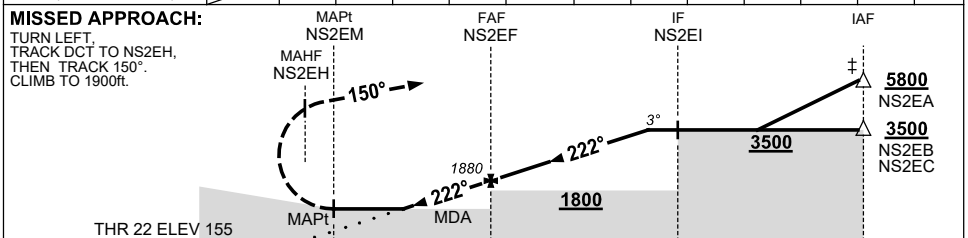
NOTES

- MAX IAS:
INITIAL : 210KT.
HOLDING: 210KT.
- RIGHT INITIAL INFRINGES M301A. AWY CLR RQ TO COMMENCE APCH FM NS2EA WHEN M301A ACT.



AD ELEV 165
Bearings are Magnetic
Elevations in FEET AMSL

NM TO NEXT WPT	NS2EM	1.2	2	3	4	NS2EF	1	2	3	4	5.1		
ALT (3° APCH PATH)	680	930	1250	1560	1880	2200	2520	2840	3160	3500			



NM TO NS2EM

0.3	5	11	17
-----	---	----	----

NOTES

- WHEN EAST SALE R AREAS ACTIVE, COM RQ WITH ES APP PRIOR TO COMMENCEMENT OF PROC.
- YMES RNP RWY 22 AND RAAF KELAN HLDG PATTERNS OVERLAY PROC AT 4500FT AND 3500FT.

CATEGORY	A	B	C	D
LNAV	680 (525-3.0)			NOT APPLICABLE
CIRCLING	860 (695-2.4)	960 (795-4.0)		
ALTERNATE	(1195-4.4)		(1295-6.0)	

Changes: GLIDING SYMBOL REMOVED, Editorial.

BNSGN01-178