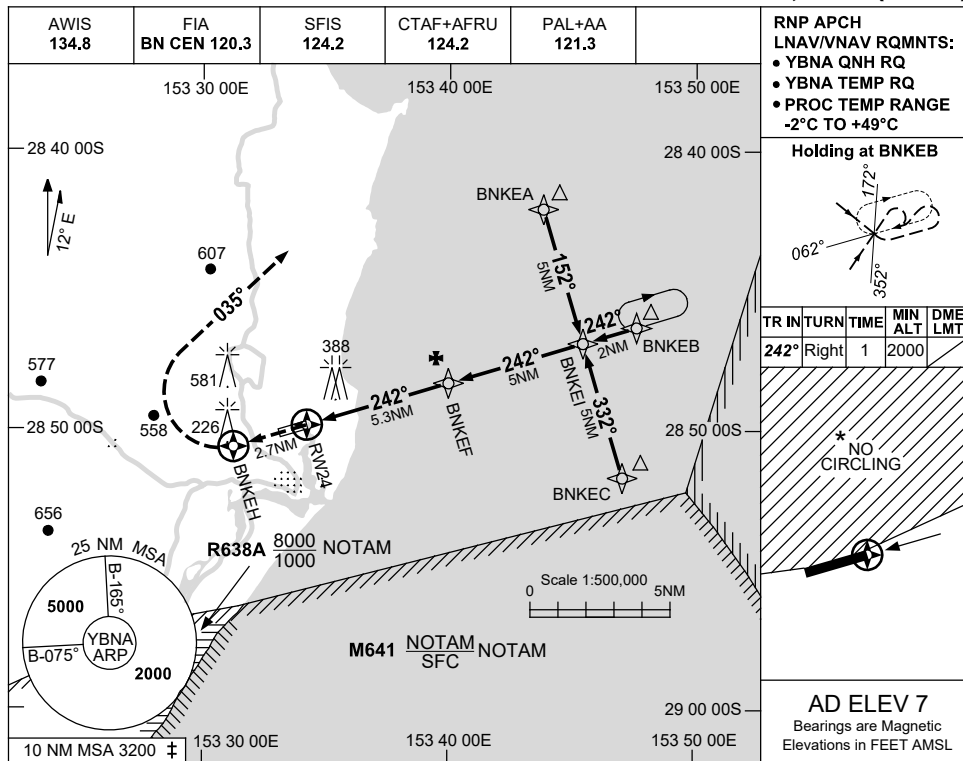


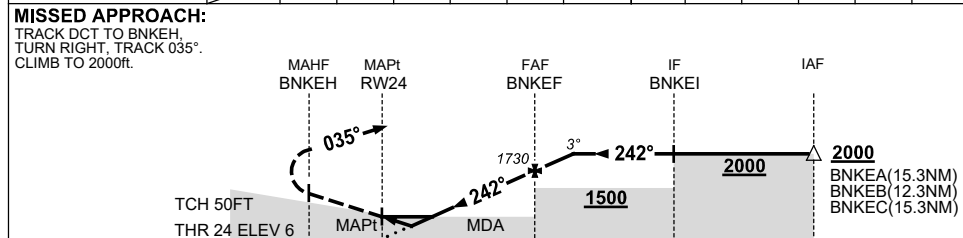
**USE QNH**  
**BALLINA/BYRON GATEWAY, NSW (YBNA)**

RNP Z RWY 24

**28 NOV 2024**



NM TO NEXT WPT	RW24	1.3	1.9	2	3	4	BNKEF	0.8				
ALT (3° APCH PATH)		470	660	690	1010	1330	1730	2000				



NM TO RW24	2.7	0	5.3	10.3
------------	-----	---	-----	------

**NOTES**

CATEGORY	A	B	C	D	
LNAV/VNAV	470	(464-2.6)		NOT APPLICABLE	
LNAV	660	(653-3.7)			
CIRCLING *	790	(783-2.4)	1030		(1023-4.0)
ALTERNATE		(1283-4.4)			(1523-6.0)

- MAX IAS:  
HOLDING : 210KT.  
INITIAL : 210KT.
- NO CIRCLING NORTH OF RWY 06 / 24.
- 10 NM MSA IS A COMBINED AREA FOR YBNA, YLIS.

Changes: M641 REPLACES R638D, Editorial.

BNAGN02-181