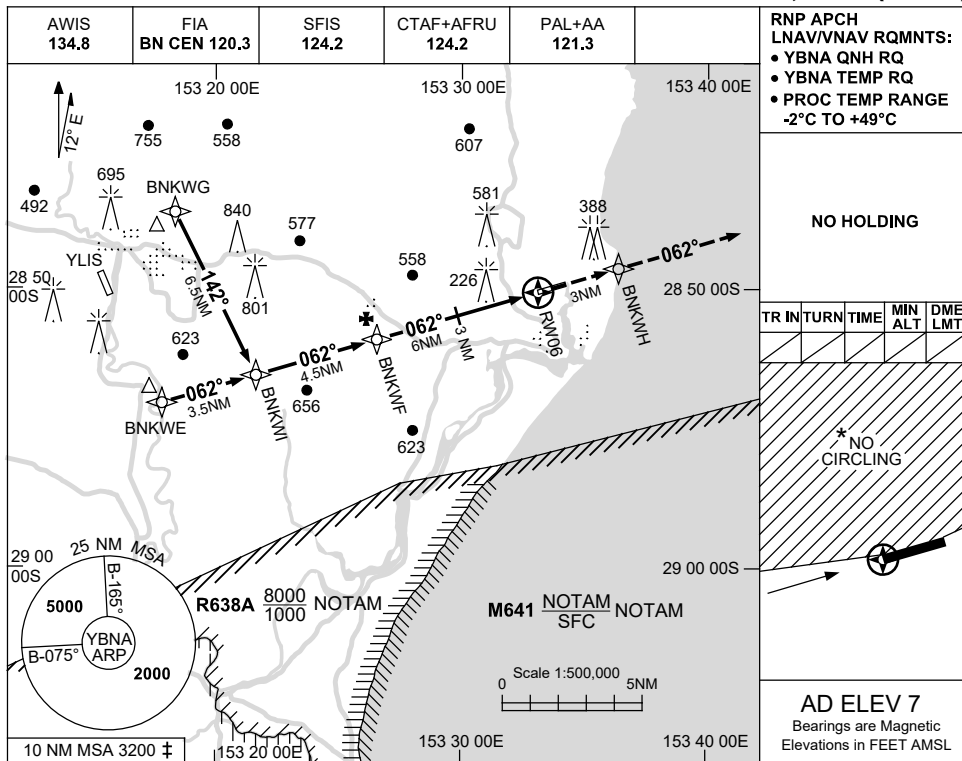


**USE QNH**  
**BALLINA/BYRON GATEWAY, NSW (YBNA)**

RNP Z RWY 06

28 NOV 2024



RNP APCH  
LNAV/VNAV RQMNTS:  
• YBNA QNH RQ  
• YBNA TEMP RQ  
• PROC TEMP RANGE  
-2°C TO +49°C

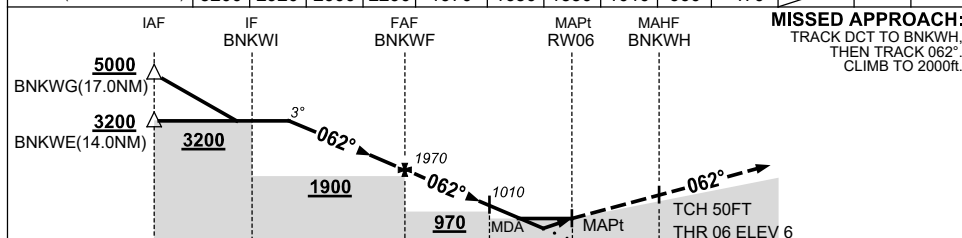
**NO HOLDING**

TR	IN	TURN	TIME	MIN ALT	DME LMT

\* NO CIRCLING

**AD ELEV 7**  
Bearings are Magnetic  
Elevations in FEET AMSL

NM TO NEXT WPT	3.9	3	2	1	BNKWF	5	4	3	1.9	1.3	RW06		
ALT (3° APCH PATH)	3200	2920	2600	2290	1970	1650	1330	1010	660	470			



**MISSED APPROACH:**  
TRACK DCT TO BNKWH,  
THEN TRACK 062°.  
CLIMB TO 2000ft.

**NOTES**

- MAX IAS:  
INITIAL : 210KT.
- 10 NM MSA IS A COMBINED AREA FOR YBNA, YLIS.
- NO CIRCLING NORTH OF RWY 06 / 24.
- CAUTION:**  
PROC OVERLAYS YLIS PROCS.

CATEGORY	A	B	C	D
LNAV/VNAV		470 (464-2.6)		NOT APPLICABLE
LNAV		660 (653-3.7)		
CIRCLING *	790 (783-2.4)		1030 (1023-4.0)	
ALTERNATE	(1283-4.4)		(1523-6.0)	

Changes: M641, Editorial.

BNAGN01-181