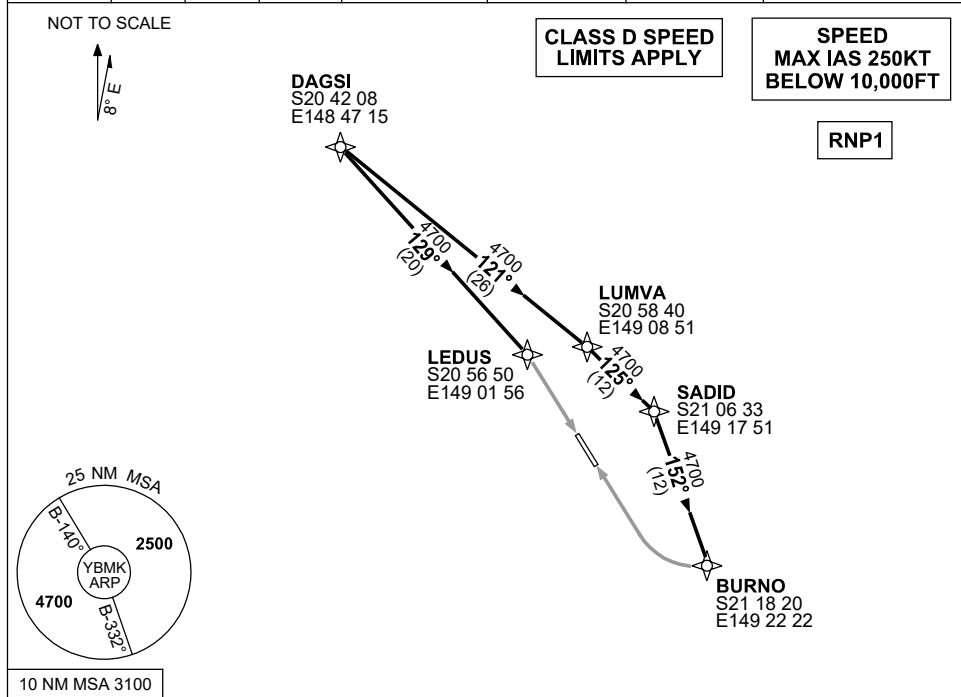


**STANDARD INSTRUMENT ARRIVAL (STAR)
DAGSI ONE ARRIVAL (RNAV)
MACKAY, QLD (YBMK)**

1 DEC 2022

| | | | | | | | |
|---------------------|--------------|--------------|-----------------------------|-------------------------|------------------------|--------------------------|--|
| ATIS 112.7 128.0 | SMC 121.7 | TWR 124.5 | CORAL APP (MK) 125.65 | CTAF+AFRU (AH) 124.5 | AFRU+PAL (AH) 124.5 | FIA (AH) BN CEN 135.5 | Bearings are Magnetic Elevations in FEET AMSL |
|---------------------|--------------|--------------|-----------------------------|-------------------------|------------------------|--------------------------|--|



ARRIVAL: DAGSI ONE

RWY 14

- From DAGSI track 129° to LEDUS
- Track via RNP RWY 14

RWY 32

- From DAGSI track 121° to LUMVA
- Turn RIGHT, Track 125° to SADID
- Turn RIGHT, Track 152° to BURNO
- Track via RNP RWY 32

COMMUNICATIONS FAILURE: PROCEDURE IN IMC

- Squawk 7600, comply with vertical navigation requirements, but not below MSA.
- Track via the latest STAR clearance to the nominated runway, then fly the most suitable approach in accordance with ERSA EMERG Section 1.5.

Changes: CORAL APP FREQUENCY.

BMKSR02-173