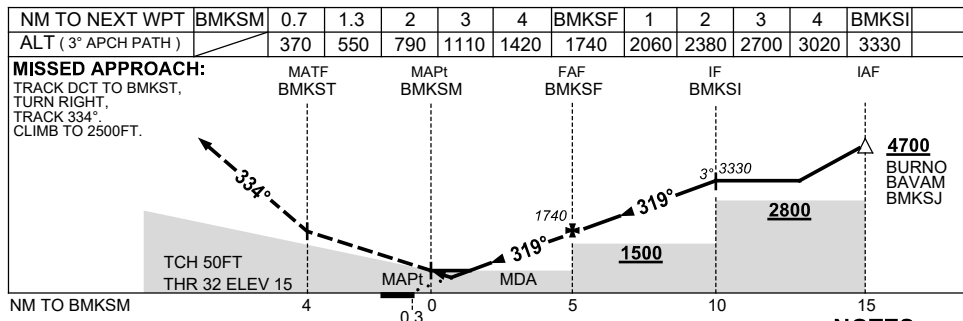
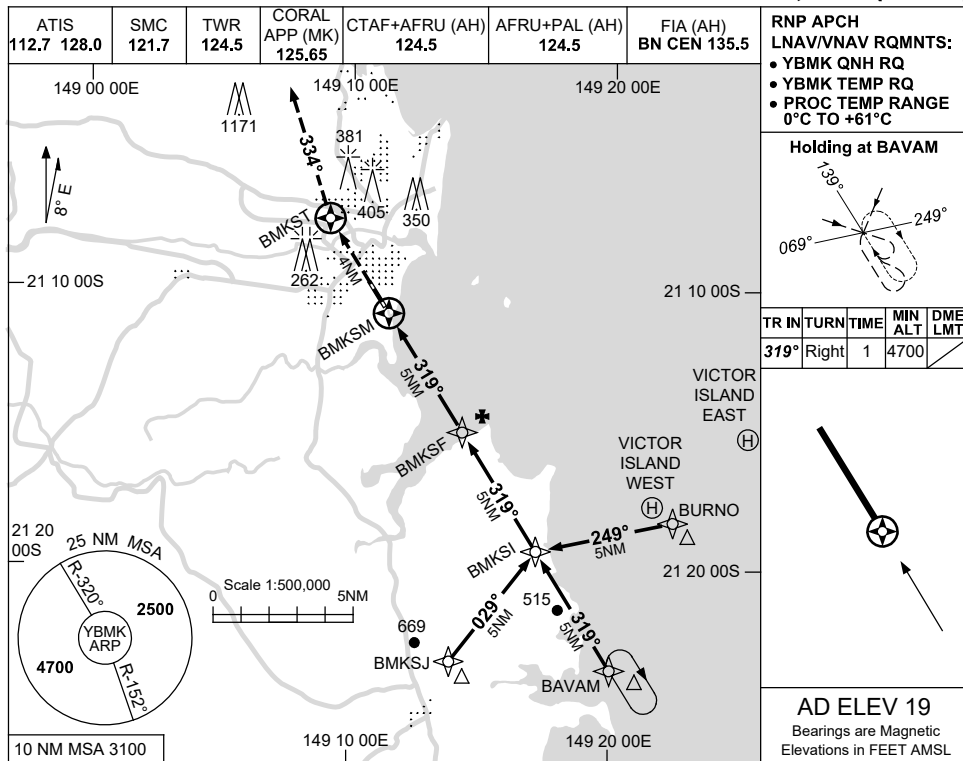


USE QNH

RNP RWY 32  
MACKAY, QLD (YBMK)

1 DEC 2022



- NOTES**
- MAX IAS:  
INITIAL : 210KT.
  - CAUTION: PROC IS OVERLAID BY VICTOR ISLAND EAST (YVIE) AND WEST (YVW) PROCS. ACFT SEPARATION NOT ASSURED.
  - HLDG NOT CONTAINED IN CTA.

CATEGORY	A	B	C	D
LNAV/VNAV		370 (355-2.0)		
LNAV		550 (531-3.0)		
CIRCLING	710 (691-2.4)	900 (881-4.0)		1160 (1141-5.0)
ALTERNATE	(1191-4.4)		(1381-6.0)	(1641-7.0)

Changes: CORAL APP FREQUENCY.

BMKGN02-173