

STANDARD INSTRUMENT DEPARTURES (SID)  
MUNAR ONE DEPARTURE (RNAV)  
**MACKAY, QLD (YBMK)**

30 NOV 2023

ATIS 112.7 128.0	SMC 121.7	TWR 124.5	CORAL APP (MK) 125.65	CTAF+AFRU (AH) 124.5	AFRU+PAL (AH) 124.5	FIA (AH) BN CEN 135.5	Bearings are Magnetic Elevations in FEET AMSL
---------------------	--------------	--------------	-----------------------------	-------------------------	------------------------	--------------------------	--

NOT TO SCALE

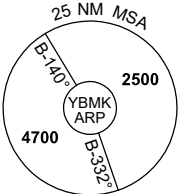
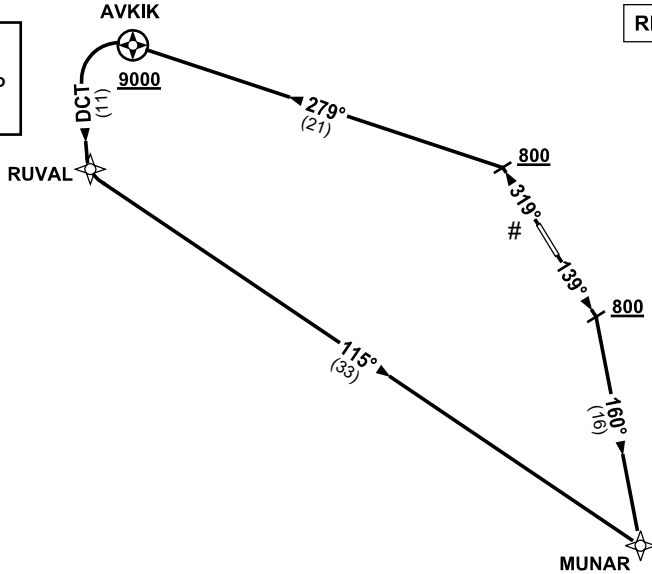


**CLASS D SPEED  
LIMITS APPLY**

**SPEED  
MAX IAS 250KT  
BELOW 10,000FT**

**RNP1**

**# CAUTION:**  
1. TREES IN  
RWY 32 DEP  
AREA.



10 NM MSA 3100

**MUNAR ONE DEPARTURE**

**RWY 14**

- GRAD 3.3%
- Track 139°
- AT or ABV 800ft turn RIGHT, intercept 160° to MUNAR, thence as cleared

**RWY 32**

- GRAD 3.7% to 800ft, then 3.3% (6.0% to 9000ft)
- Track 319°
- AT or ABV 800ft turn LEFT, intercept 279° to AVKIK
- **Cross AVKIK AT or ABV 9000ft**
- Turn LEFT, track DCT to RUVAL
- Turn LEFT, track 115° to MUNAR, thence as cleared

Changes: AVKIK REPLACES HARPO, MUNAR REPLACES POONA, CHART TITLE, Editorial.

BMKDP03-177