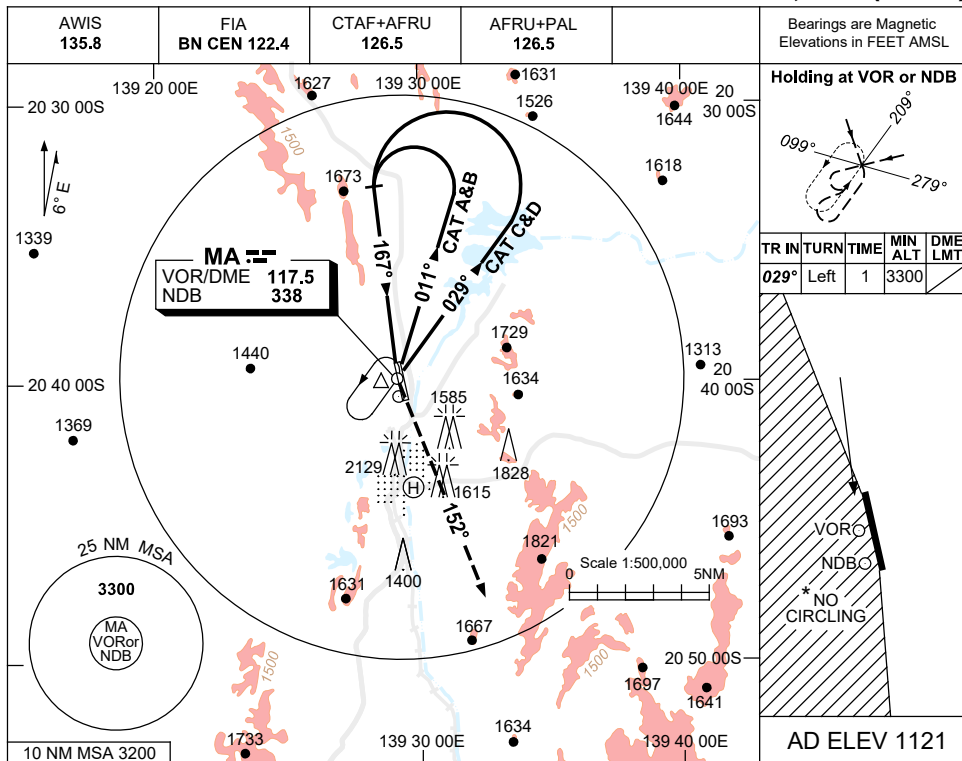


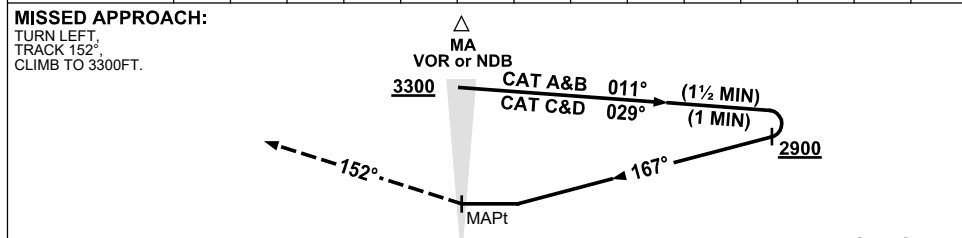
USE QNH

NDB-A or VOR-A
MOUNT ISA, QLD (YBMA)

15 JUN 2023



DME DIST	NOT APPLICABLE				
ALT					



NOTES

1. MAX IAS:
INITIAL :
CAT C&D 190KT.
- *2. NO CIRCLING WEST
OF RWY 16/34.
3. NDB HLDG PTN
INBOUND LEG MAY
BE SUBJECT TO
EXCESSIVE NEEDLE
SWINGS.
4. COLOUR: SEE
SPEC NOTICES.

CATEGORY	A	B	C	D
CIRCLING *	2220 (1099-2.4)		2450 (1329-4.0)	2450 (1329-5.0)
ALTERNATE	(1599-4.4)		(1829-6.0)	(1829-7.0)

Changes: CAT C&D OUTBOUND TRK.

BMANB01-175