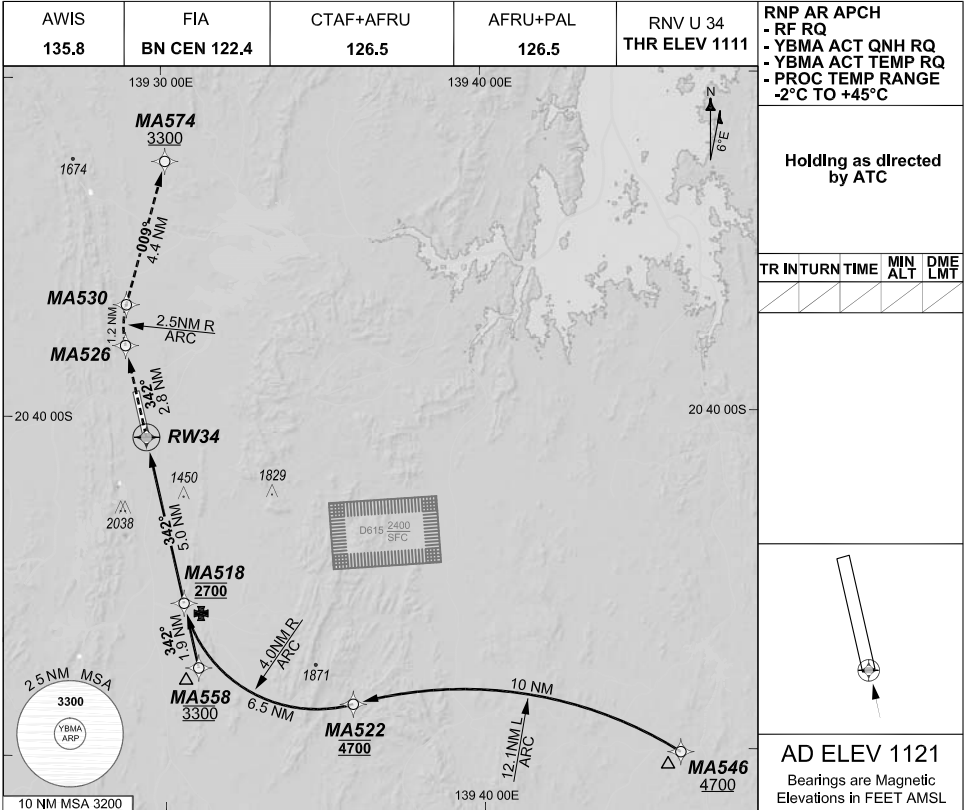


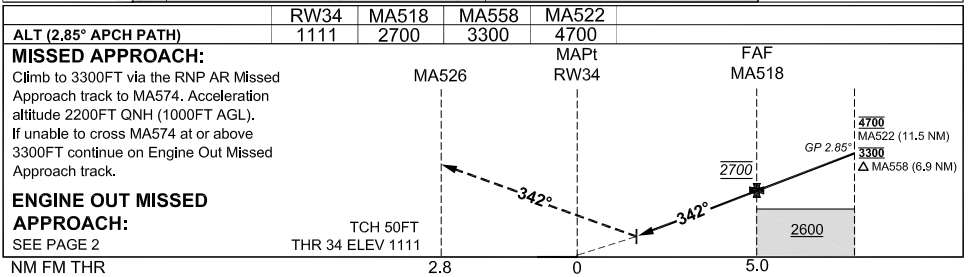
**FOR CASA APPROVED
OPERATORS ONLY
USE QNH**

1 DEC 2022

GE PROPRIETARY INFORMATION



202208051421 COPYRIGHT 2022 NAVERUS, INC. USA



NOTES

- Lateral transition to MAP must not be initiated prior to DAVH PSN.
- APCH Path does not coincide with PAPI glide path 3°.
- MIN MAP GRAD (AE) for RNP 0.15 and RNP 0.20 3.6% to 3000FT. RNP 0.30 3.5% to 3300 FT.

Changes: Chart reformatting, RNP 0.30 DA/VIS change, Glide path note, Added D615 danger area.

BMAGN04-173

DO NOT USE FOR NAVIGATION

Prepared by GE Aviation

