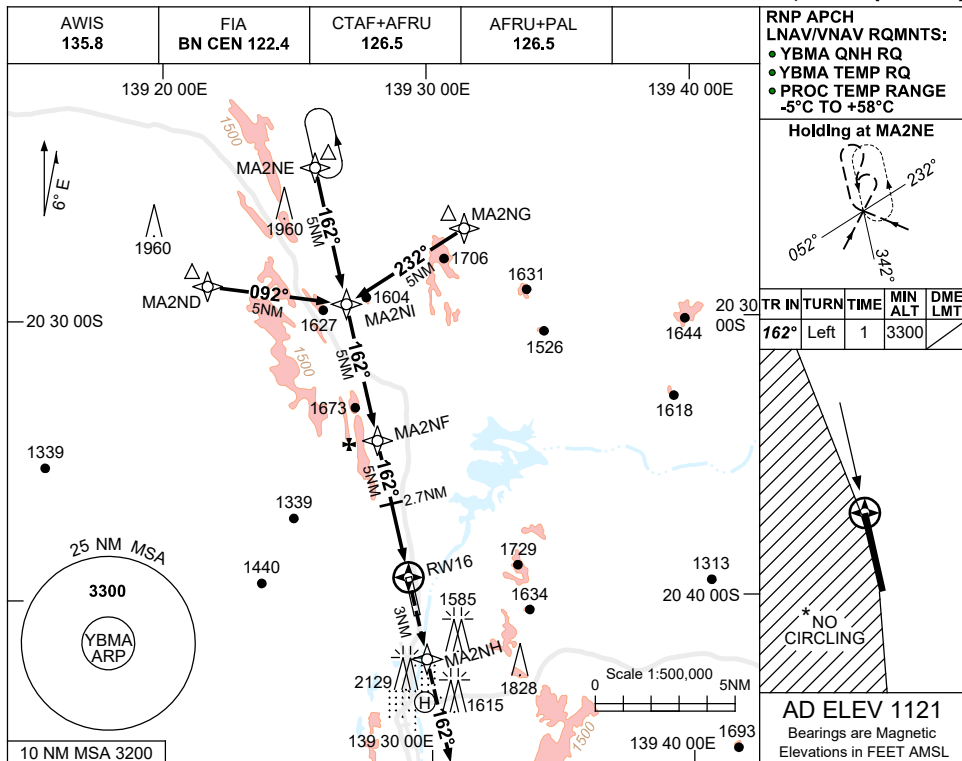


USE QNH

RNP Z RWY 16

15 JUN 2023

MOUNT ISA, QLD (YBMA)



**RNP APCH LNAV/VNAV RQMNTS:**

- YBMA QNH RQ
- YBMA TEMP RQ
- PROC TEMP RANGE -5°C TO +58°C

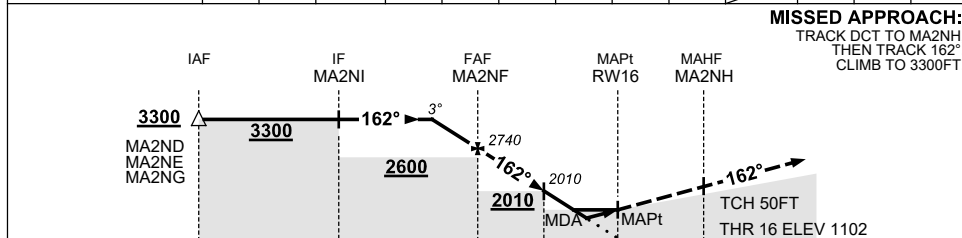
**Holding at MA2NE**

TR	IN	TURN	TIME	MIN ALT	DME LMT
162°	Left	1	3300		

**AD ELEV 1121**  
Bearings are Magnetic  
Elevations in FEET AMSL

\* NO CIRCLING

NM TO NEXT WPT	1.7	1	MA2NF	4	3	2.7	2.5	2	1.8	RW16
ALT (3° APCH PATH)	3300	3060	2740	2430	2110	2010	1940	1790	1740	



**MISSED APPROACH:**  
TRACK DCT TO MA2NH,  
THEN TRACK 162°.  
CLIMB TO 3300FT.

NM TO RW16 15 10 5 2.7 0 3

CATEGORY	A	B	C	D
LNAV/VNAV		1740 (638-3.6)		
LNAV		1940 (838-4.8)		
CIRCLING *	2090 (969-2.4)		2450 (1329-4.0)	2450 (1329-5.0)
ALTERNATE	(1469-4.4)		(1829-6.0)	(1829-7.0)

- NOTES**
1. MAX IAS: INITIAL : 210KT.
  - \*2. NO CIRCLING WEST OF RWY 16/34.
  3. COLOUR: SEE SPEC NOTICES.

Changes: Editorial.

BMAGN01-175