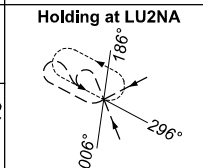
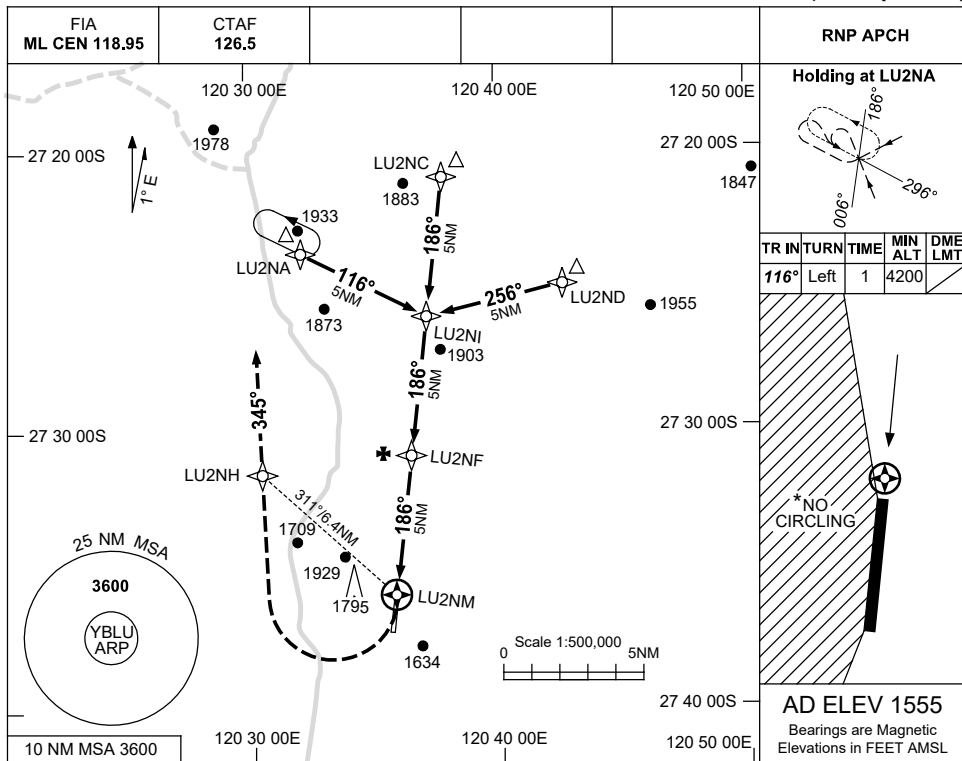


USE QNH

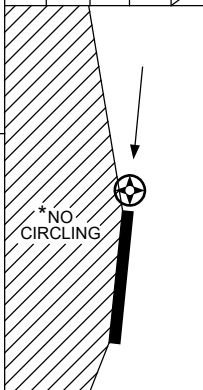
RNP RWY 19

28 NOV 2024

BELLEVUE, WA (YBLU)

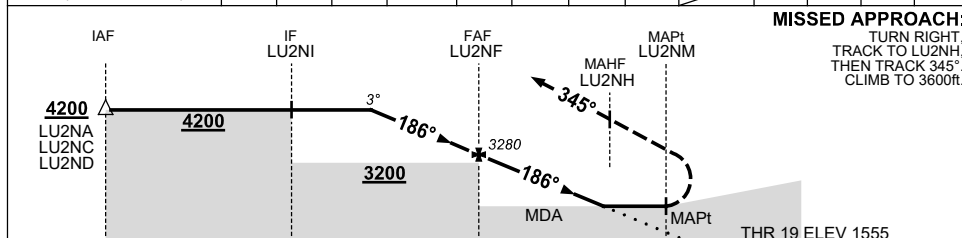


TR	IN	TURN	TIME	MIN ALT	DME LMT
116°	Left	1	4200		



AD ELEV 1555
Bearings are Magnetic
Elevations in FEET AMSL

NM TO NEXT WPT	2.9	2	1	LU2NF	4	3	2.1	1.7	LU2NM
ALT (3° APCH PATH)	4200	3920	3600	3280	2960	2650	2360	2240	



MISSED APPROACH:
TURN RIGHT,
TRACK TO LU2NH,
THEN TRACK 345°.
CLIMB TO 3600ft.

CATEGORY	A		B		C		D
	2370 (815-2.4)		2470 (915-4.0)		NOT APPLICABLE		
LNAV (2.5% MAP)	3600 (805-4.6)		3260 (805-4.6)		2360 (805-4.6)		NOT APPLICABLE
LNAV (4.0% MAP)	3240 (685-3.9)		2240 (685-3.9)		2240 (685-3.9)		
CIRCLING	2370 (815-2.4)		2470 (915-4.0)				
ALTERNATE	(1315-4.4)		(1415-6.0)				

- NOTES**
- MAX IAS:
INITIAL : 210Kt.
MISSED APCH : 160Kt.
TURN : 160Kt.
 - NO CIRCLING WEST OF RWY 01 / 19
 - CAUTION: PROC OVERLAYS WITH LEINSTER AND MT KEITH PROC.

Changes: MSA, NO CIRCLING, LNAV MINIMA, NOTE 2, DIST-ALT, Editorial. BLUGN01-181