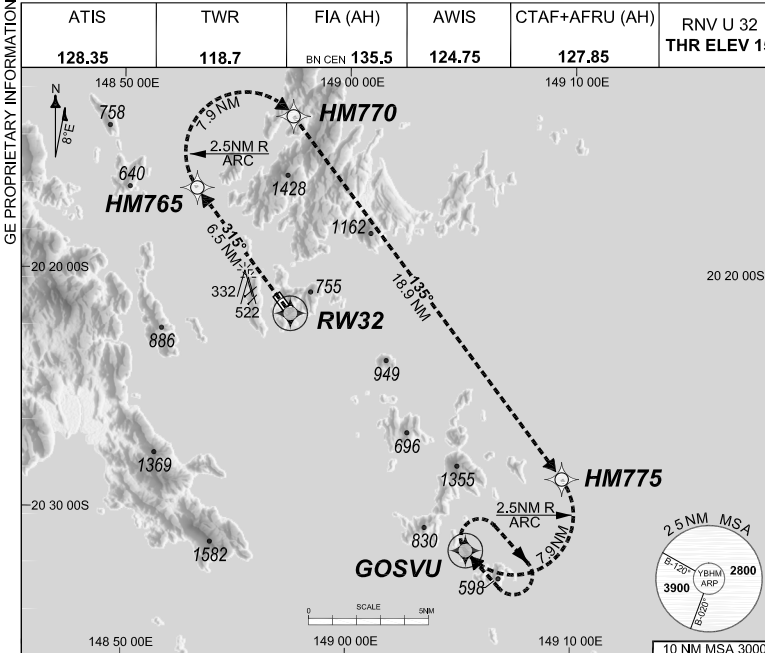


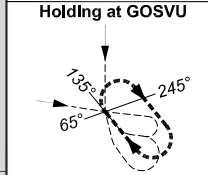
24 MAR 2022

USE QNH

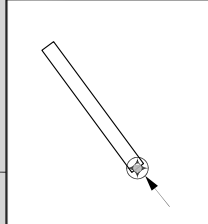
HAMILTON ISLAND, QLD (YBHM)



RNP AR APCH		
- RF RQ		
- YBHM ACT QNH RQ		
- YBHM ACT TEMP RQ		
- PROC TEMP RANGE		
+14°C TO +36°C		
Holding at GOSVU		



TR IN	TURN TIME	MIN ALT	DME LMT
315°	Right	1'	4000



AD ELEV 15
Bearings are Magnetic
Elevations in FEET AMSL

ENGINE OUT MISSED APPROACH:

Track via the RNP AR Engine Out Missed Approach track to GOSVU and hold as published.

Acceleration altitude see Go-Around Safety Assessment.
Continue to climb in hold as necessary to 4000FT, or as directed by ATC. EO hold only, not contained in CTA. Maximum holding speed **230 KIAS**.

202109231255 COPYRIGHT 2021 NAVERUS, INC. USA

Revision: From SUP H97/21, chart title

BHMG08-170

DO NOT USE FOR NAVIGATION

Prepared by GE Aviation

