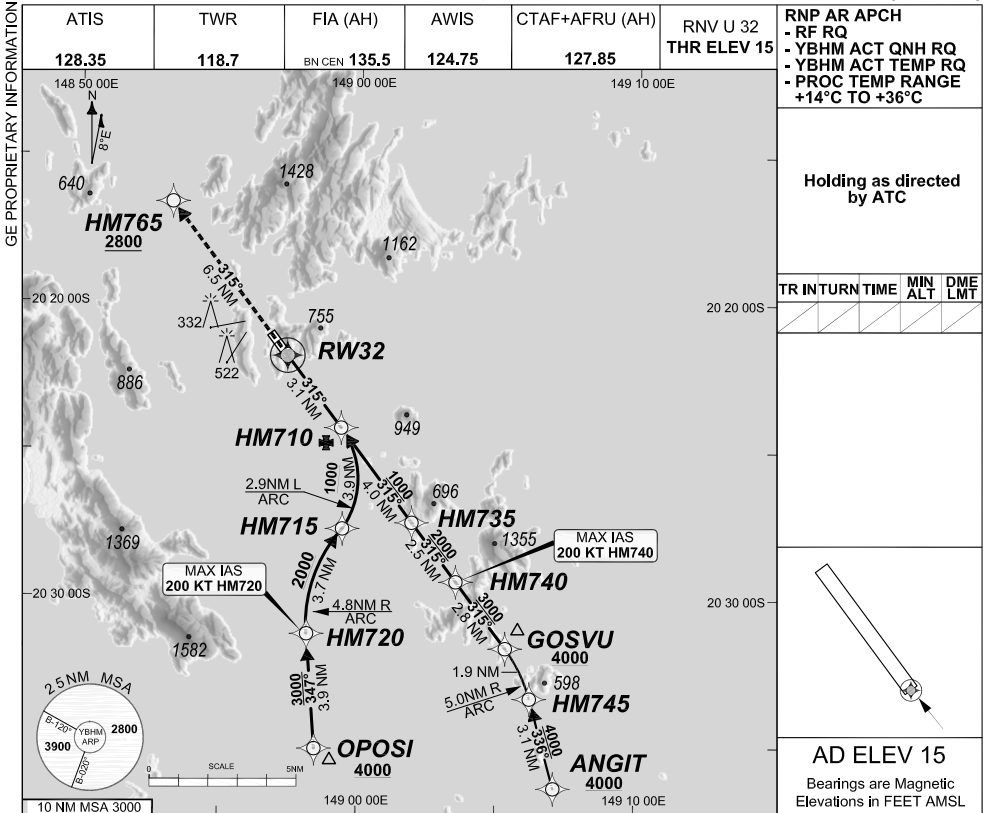


FOR CASA APPROVED OPERATORS ONLY

24 MAR 2022

USE QNH

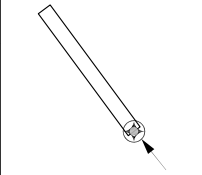
HAMILTON ISLAND, QLD (YBHM)



RNP AR APCH  
 - RF RQ  
 - YBHM ACT QNH RQ  
 - YBHM ACT TEMP RQ  
 - PROC TEMP RANGE +14°C TO +36°C

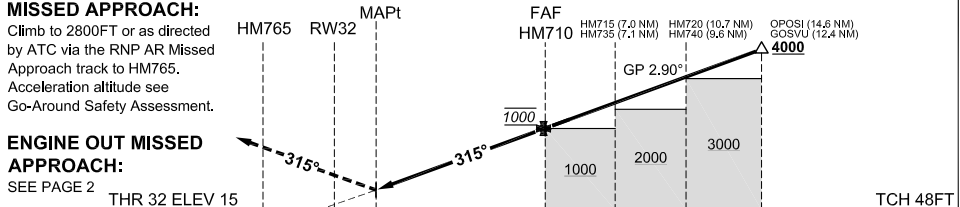
Holding as directed by ATC

TR	INTURN	TIME	MIN ALT	DME LMT



AD ELEV 15  
 Bearings are Magnetic Elevations in FEET AMSL

ALT (2.90° APCH PATH)	RW32	HM710	HM715	HM735	HM740	HM720
	63	1000	2180	2230	3000	3300



**MISSED APPROACH:**  
 Climb to 2800FT or as directed by ATC via the RNP AR Missed Approach track to HM765. Acceleration altitude see Go-Around Safety Assessment.

**ENGINE OUT MISSED APPROACH:**  
 SEE PAGE 2

NM FM THR 6.5 0 3.1

**NOTES**

1. PROC AVBL up to MLW.
2. Lateral transition to MAP must not be initiated prior to DA/H PSN.
3. APCH Path does not coincide with PAPI glide path 3°.
4. Transient yacht masts may infringe RWY 32 visual approach slope clearance.
5. See Engineering Report for Minimum MAP gradient (AE) to 2800 FT.

CATEGORY	A	B	C	D
RNP (0.30)	NOT APPLICABLE		DA(H) 628' (613')-3.4	
RNP ( )	NOT APPLICABLE		DA(H) ( ) - .	
RNP ( )	NOT APPLICABLE		DA(H) ( ) - .	
RNP ( )	NOT APPLICABLE		DA(H) ( ) - .	
CIRCLING			NOT AUTHORISED	

202109301941 COPYRIGHT 2021 NAVERUS, INC. USA

Revision: From SUP H97/21, chart title

BHMG07-170

**DO NOT USE FOR NAVIGATION**

Prepared by GE Aviation

