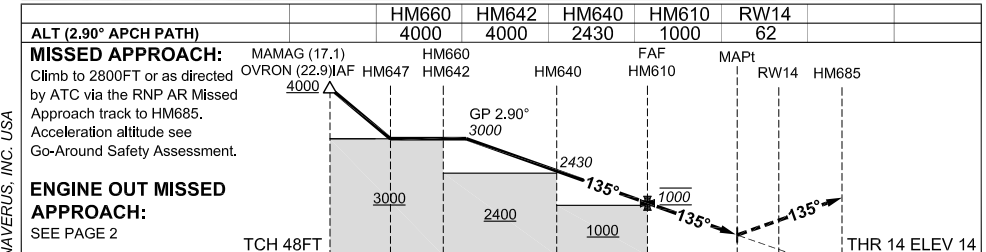
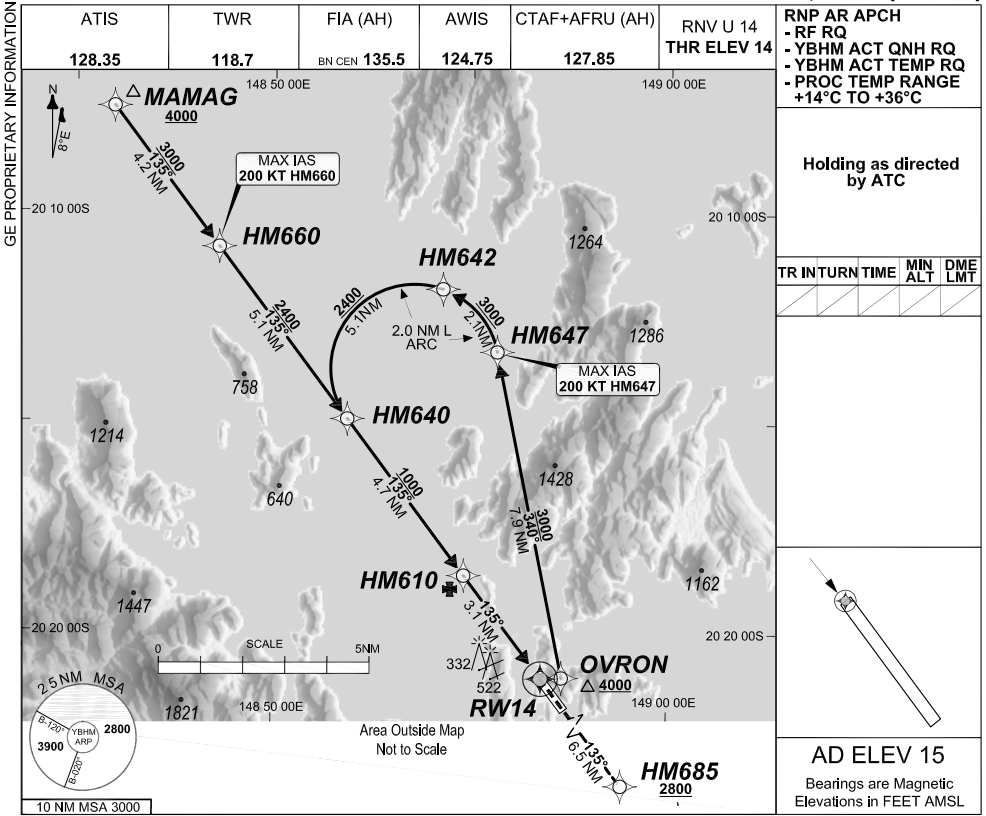


**FOR CASA APPROVED OPERATORS ONLY**

24 MAR 2022

USE QNH

**HAMILTON ISLAND, QLD (YBHM)**



**MISSED APPROACH:** Climb to 2800FT or as directed by ATC via the RNP AR Missed Approach track to HM685. Acceleration altitude see Go-Around Safety Assessment.

**ENGINE OUT MISSED APPROACH:** SEE PAGE 2

CATEGORY	A	B	C	D
RNP (0.30)	NOT APPLICABLE		DA(H) 653' (639')-3.6	
RNP ( )	NOT APPLICABLE		DA(H) ( )-. .	
RNP ( )	NOT APPLICABLE		DA(H) ( )-. .	
RNP ( )	NOT APPLICABLE		DA(H) ( )-. .	
CIRCLING			NOT AUTHORISED	

- NOTES**
- PROC AVBL up to MLW.
  - Lateral transition to MAP must not be initiated prior to DA/H PSN.
  - APCH Path does not coincide with PAPI glide path 3°.
  - Transient yacht masts may infringe RWY 14 visual approach slope clearance.
  - See Engineering Report for Minimum MAP gradient (AE) to 2800 FT.

20210930/1556 COPYRIGHT 2021 NAVERUS, INC. USA

Revision: From SUP H97/21, chart title

BHMGN05-170

**DO NOT USE FOR NAVIGATION**

Prepared by GE Aviation

