

FOR CASA APPROVED OPERATORS ONLY

24 MAR 2022

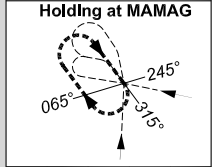
USE QNH

HAMILTON ISLAND, QLD (YBHM)

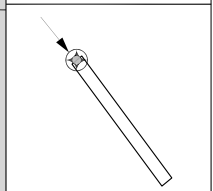
GE PROPRIETARY INFORMATION

ATIS 128.35	TWR 118.7	FIA (AH) BN CEN 135.5	AWIS 124.75	CTAF+AFRU (AH) 127.85	RNV P 14 THR ELEV 14
-----------------------	---------------------	---------------------------------	-----------------------	---------------------------------	-------------------------

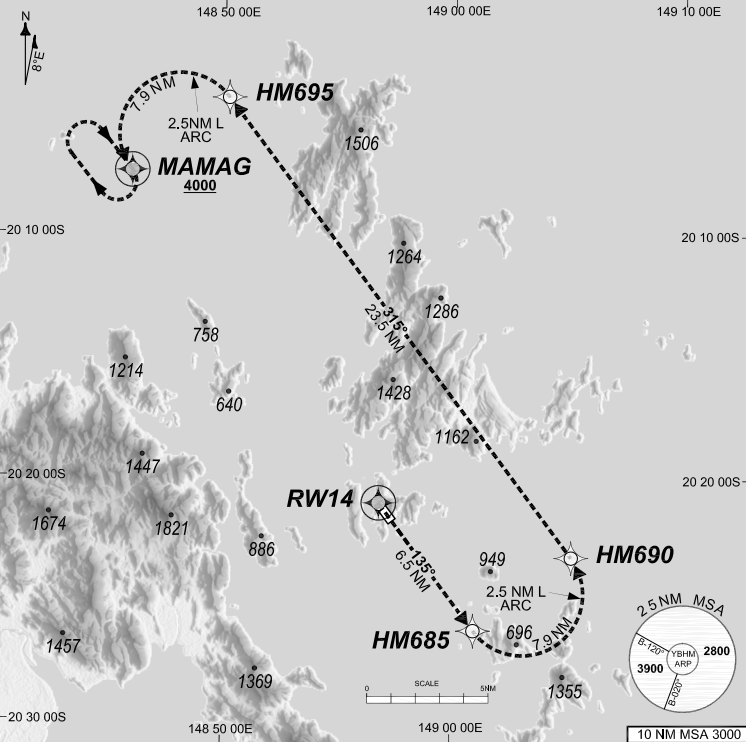
RNP AR APCH
 - RF RQ
 - YBHM ACT QNH RQ
 - YBHM ACT TEMP RQ
 - PROC TEMP RANGE
 +14°C TO +36°C



TR	INTURN	TIME	MIN ALT	DME LMT
135°	Right	1'	4000	



AD ELEV 15
 Bearings are Magnetic Elevations in FEET AMSL



ENGINE OUT MISSED APPROACH:

Track via the RNP AR Engine Out Missed Approach track to MAMAG and hold as published.

Acceleration altitude see Go-Around Safety Assessment.
 Continue to climb in hold as necessary to 4000FT, or as directed by ATC. EO hold only, not contained in CTA. Maximum holding speed **230 KIAS**.

20210929/1239 COPYRIGHT 2021 NAVERUS, INC. USA

Revision: From SUP H97/21, chart title

BHMG04-170

DO NOT USE FOR NAVIGATION

Prepared by GE Aviation

