

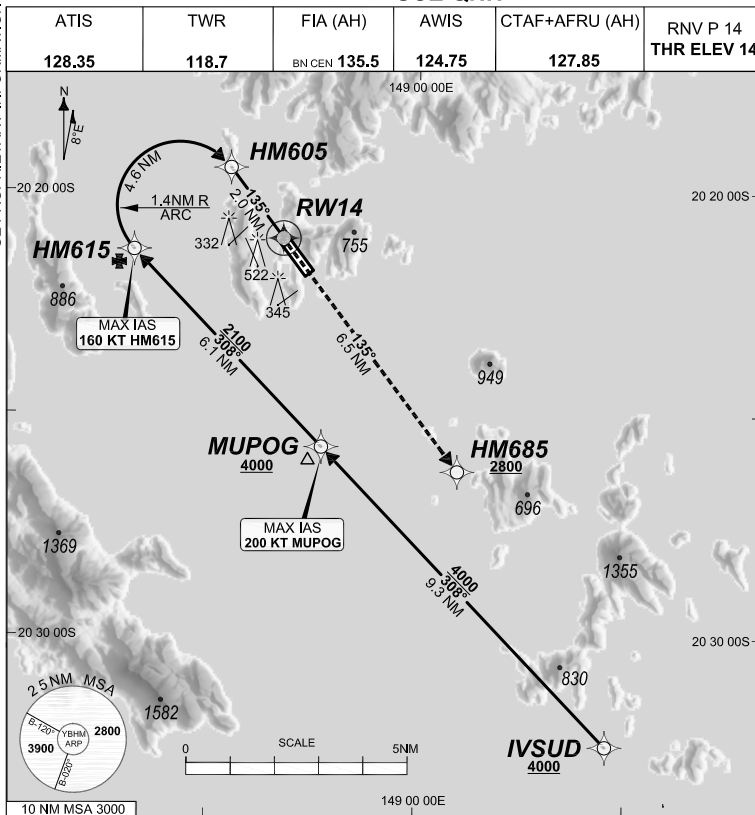
FOR CASA APPROVED OPERATORS ONLY

24 MAR 2022

USE QNH

HAMILTON ISLAND, QLD (YBHM)

GE PROPRIETARY INFORMATION

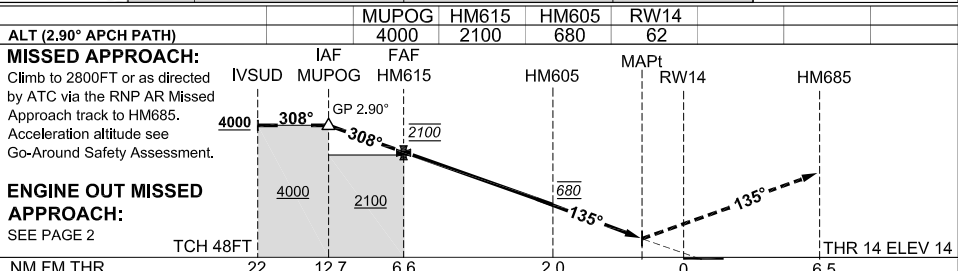


RNP AR APCH  
 - RF RQ  
 - YBHM ACT QNH RQ  
 - YBHM ACT TEMP RQ  
 - PROC TEMP RANGE +14°C TO +36°C

Holding as directed by ATC

| TR | INTURN TIME | MIN ALT | DME LMT |
|----|-------------|---------|---------|
| /  | /           | /       | /       |

AD ELEV 15  
 Bearings are Magnetic Elevations in FEET AMSL



**NOTES**

- PROC AVBL up to MLW.
- Lateral transition to MAP must not be initiated prior to DA/H PSN.
- APCH Path does not coincide with PAPI glide path 3°.
- Transient yacht masts may infringe RWY 14 visual approach slope clearance.
- See Engineering Report for Minimum MAP gradient (AE) to 2800 FT.

| CATEGORY   | A              | B | C                     | D |
|------------|----------------|---|-----------------------|---|
| RNP (0.30) | NOT APPLICABLE |   | DA(H) 669' (655')-3.7 |   |
| RNP ( )    | NOT APPLICABLE |   | DA(H) ( ) - .         |   |
| RNP ( )    | NOT APPLICABLE |   | DA(H) ( ) - .         |   |
| RNP ( )    | NOT APPLICABLE |   | DA(H) ( ) - .         |   |
| CIRCLING   |                |   | NOT AUTHORISED        |   |

Revision: From SUP H97/21, chart title

BHMG03-170

**DO NOT USE FOR NAVIGATION**

Prepared by GE Aviation



202109301559 COPYRIGHT 2021 NAVERUS, INC. USA