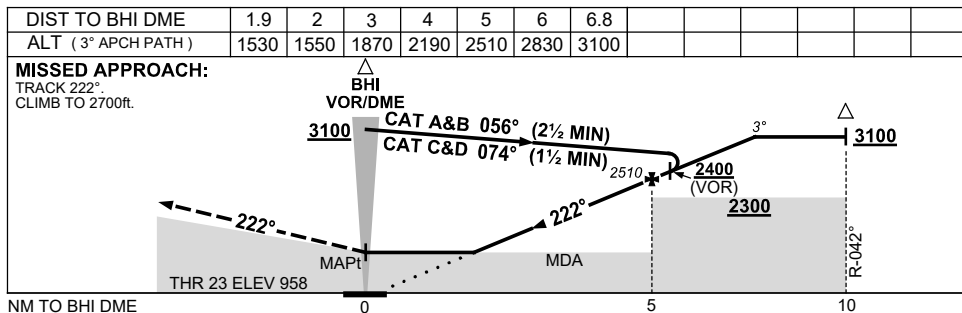
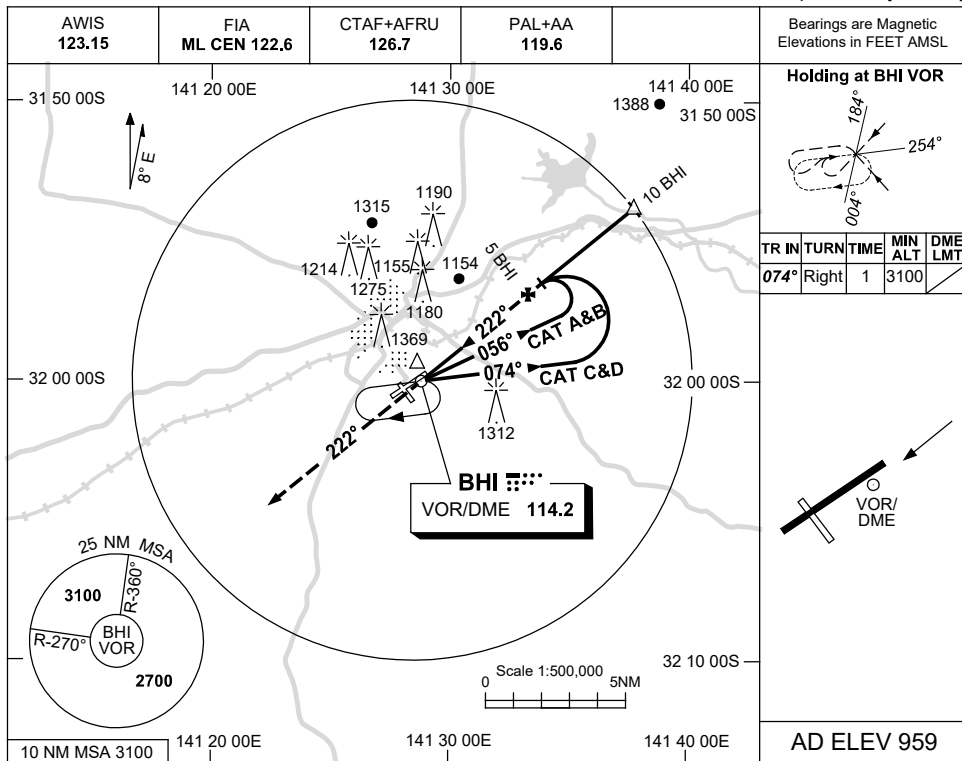


USE QNH

VOR RWY 23

5 SEP 2024

BROKEN HILL, NSW (YBHI)



NOTES

CATEGORY	A	B	C	D
S-I VOR		1710 (751-4.3)		
S-I VOR/DME		1530 (571-3.2)		
CIRCLING	1770 (811-2.4)		1880 (921-4.0)	1880 (921-5.0)
ALTERNATE	(1311-4.4)		(1421-6.0)	(1421-7.0)

1. MAX IAS:
BASE TURN : 210KT
2. SCALLOPING MAY OCCUR ON FINAL.

Changes: CIRCLING MINIMA, Editorial.

BHIVO02-180