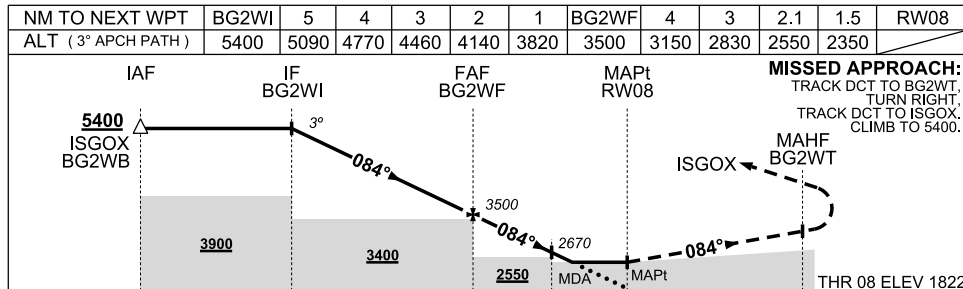
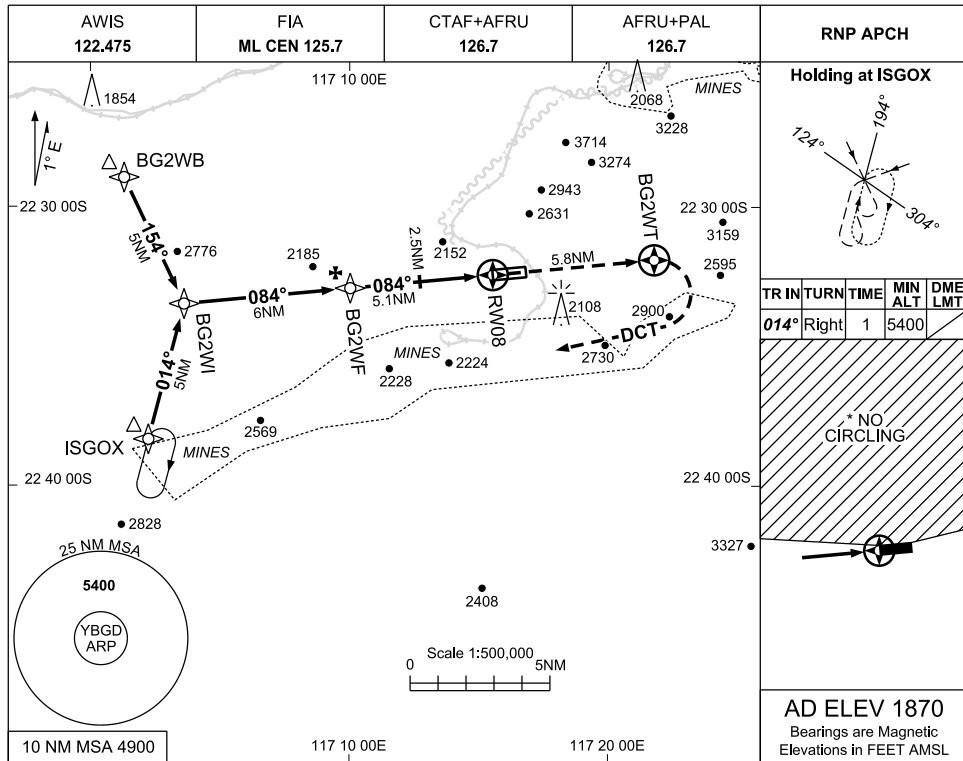


21 MAR 2024

USE QNH

RNP RWY 08  
**BOOLGEEDA, WA (YBGD)**



**NOTES**

- MAX IAS 210KT
- MIN MAP GRADIENT 3.4% TO BG2WT, THEN 2.5%
- NO CIRCLING NORTH OF RWY 08/26
- CAUTION: YBGD IN CLOSE PROXIMITY TO YEWA APPROACH PROCEDURES, YEWA LOCATED 22NM WNW OF YBGD.

CATEGORY	A	B	C	D
LNAV (2.5%)	2550 (728-4.2)			
# LNAV (3.4%)	2350 (528-3.0)			
* CIRCLING	2550(680-2.0)	2990(1120-2.4)	3390(1520-4.0)	3510(1640-5.0)
ALTERNATE	(1180-4.0)	(1620-4.4)	(2020-6.0)	(2140-7.0)

Changes: WPT EGIDA RENAMED ISGOX

BGDGN01-178