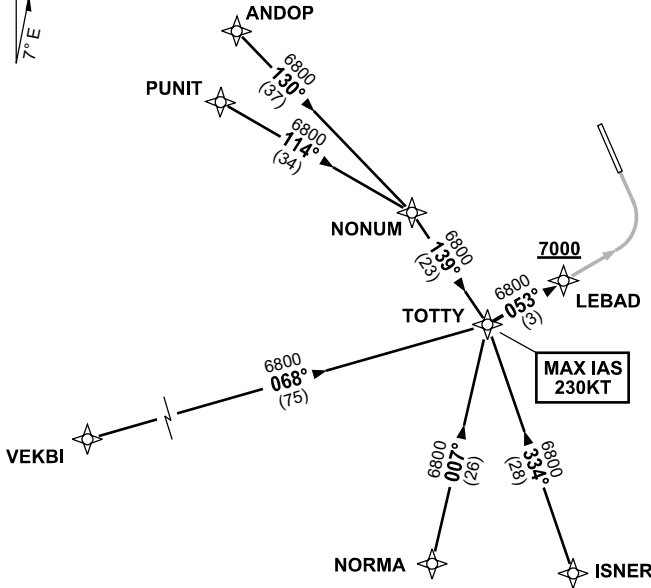


**STANDARD INSTRUMENT ARRIVAL (STAR)
TOTTY FIVE WHISKEY ARRIVAL (RNAV)
CAIRNS/CAIRNS INTL, QLD (YBCS)**

30 NOV 2023

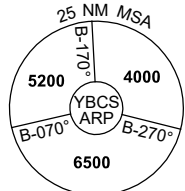
ATIS 113.0 131.1	APP 118.4 126.1	TWR 124.9	SMC 121.7		Bearings are Magnetic Elevations in FEET AMSL
---------------------	--------------------	--------------	--------------	--	--

NOT TO SCALE



**SPEED
MAX IAS 250KT
BELOW 10,000ft**

**MAX IAS
230KT**



10 NM MSA 5600

TRANSITIONS:

- ANDOP:** From ANDOP to TOTTY
- Track 130° to NONUM,
 - Turn RIGHT, track 139° to TOTTY
- PUNIT:** From PUNIT to TOTTY
- Track 114° to NONUM,
 - Turn RIGHT, track 139° to TOTTY

- VEKBI:** From VEKBI to TOTTY
- Track 068° to TOTTY
- NORMA:** From NORMA to TOTTY
- Track 007° to TOTTY
- ISNER:** From ISNER to TOTTY
- Track 334° to TOTTY

FOLLOW ARRIVAL INSTRUCTIONS

ARRIVAL: TOTTY FIVE

RWY 33 WHISKEY: From TOTTY track 053° to LEBAD, thence via RNP W RWY 33 (AR)
MAX IAS 230KT from TOTTY

**COMMUNICATIONS FAILURE: PROCEDURE IN IMC
IF ABLE CTC CS ATC ON TEL: (07) 3866 3533**

- Squawk 7600, comply with vertical navigation requirements, but not below MSA.
- Track via the latest STAR clearance to the nominated runway, then fly the most suitable approach in accordance with ERSA EMERG Section 1.5.