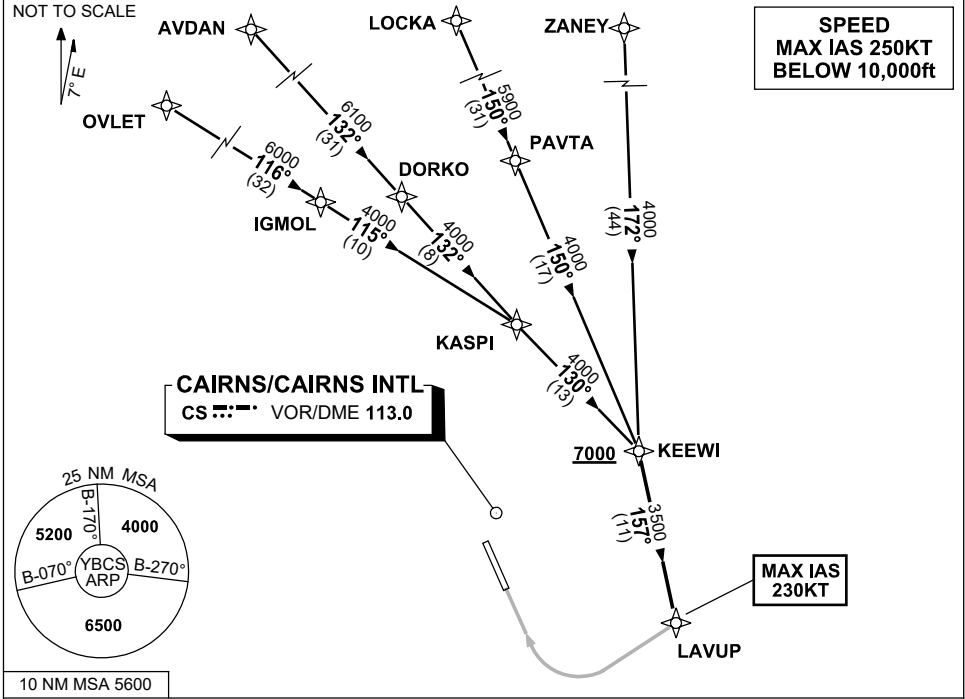


**STANDARD INSTRUMENT ARRIVAL (STAR)
KEEWI THREE X-RAY ARRIVAL (RNAV)
CAIRNS/CAIRNS INTL, QLD (YBCS)**

30 NOV 2023

ATIS 113.0 131.1	APP 118.4 126.1	TWR 124.9	SMC 121.7		Bearings are Magnetic Elevations in FEET AMSL
---------------------	--------------------	--------------	--------------	--	--



**SPEED
MAX IAS 250KT
BELOW 10,000ft**

TRANSITIONS:

- ZANEY:**
 - From ZANEY track 172° to KEEWI
- LOCKA:**
 - From LOCKA track 150° to PAVTA
 - Track 150° to KEEWI
- AVDAN:**
 - From AVDAN track 132° to DORKO
 - Track 132° to KASPI
 - Track 130° to KEEWI
- OVLET:**
 - From OVLET track 116° to IGMOL
 - Track 115° to KASPI
 - Track 130° to KEEWI

FOLLOW ARRIVAL INSTRUCTIONS

ARRIVAL: KEEWI THREE
RWY 33 X-RAY: **Cross** KEEWI AT or ABV 7000ft
 • From KEEWI track 157° to LAVUP, thence via RNP X RWY 33 (AR)
 MAX IAS 230KT from LAVUP

**COMMUNICATIONS FAILURE: PROCEDURE IN IMC
IF ABLE CTC CS ATC ON TEL: (07) 3866 3533**

- Squawk 7600, comply with vertical navigation requirements, but not below MSA.
- Track via the latest STAR clearance to the nominated runway, then fly the most suitable approach in accordance with ERSA EMERG Section 1.5.

Changes: WAYPOINT NAMES, VALIDITY NUMBER, Editorial.