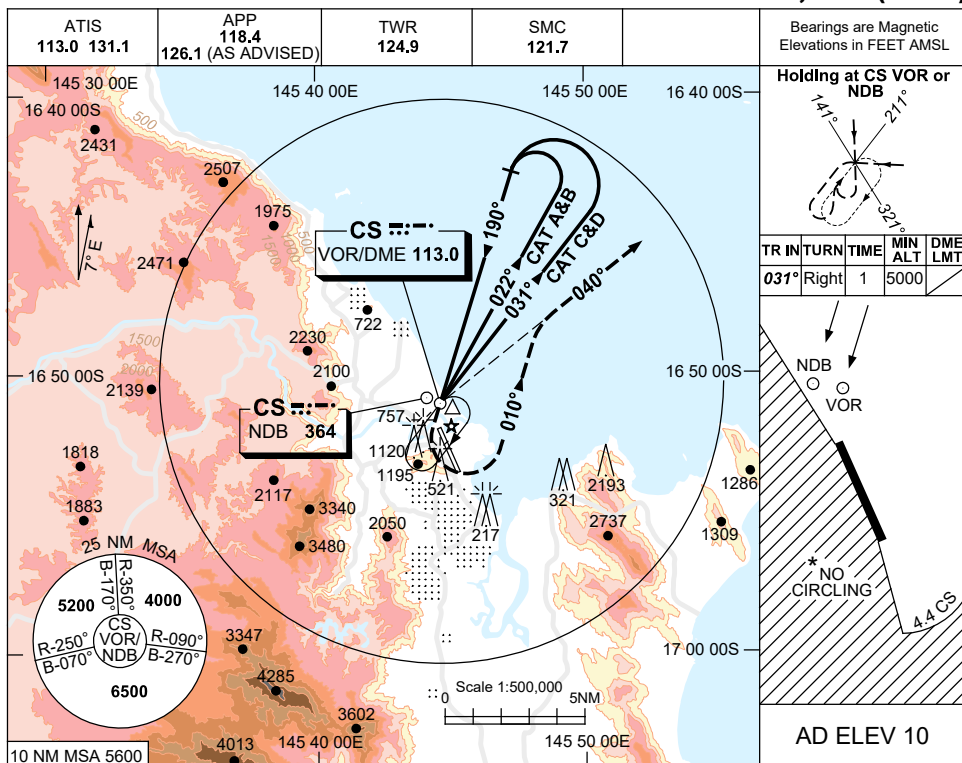


USE QNH

NDB-B or VOR-B

2 DEC 2021

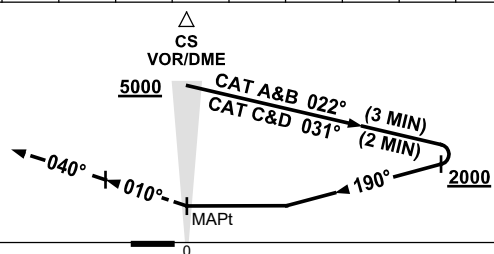
CAIRNS/CAIRNS INTL, QLD (YBCS)



DME DIST	NOT APPLICABLE			
ALT				

MISSED APPROACH:

AT NDB or VOR TURN LEFT
 TRACK 010°, INTERCEPT
 040° CS VOR or NDB.
 CLIMB TO 4000FT OR AS
 DIRECTED BY ATC.



NM TO CS DME

NOTES

1. MAX IAS:
 HOLDING: 185KT.
 INITIAL: CAT A&B 140KT.
 MAP TURN: 185KT.
- *2. NO CIRCLING WEST OF RWY 15/33 OR BEYOND 4.4 DME OR 2NM SOUTH OF THR RWY 33.
- ‡3. WITHOUT ILS, LOC & DME.
4. **COLOUR:** SEE SPEC NOTICES.

CATEGORY	A	B	C	D
CIRCLING *	1620 (1610-2.4)	1620 (1610-4.0)	1620 (1610-5.0)	
ALTERNATE ‡	(2110-4.4)	(2110-6.0)	(2110-7.0)	

Changes: APP FREQ.

BCSNB02-199