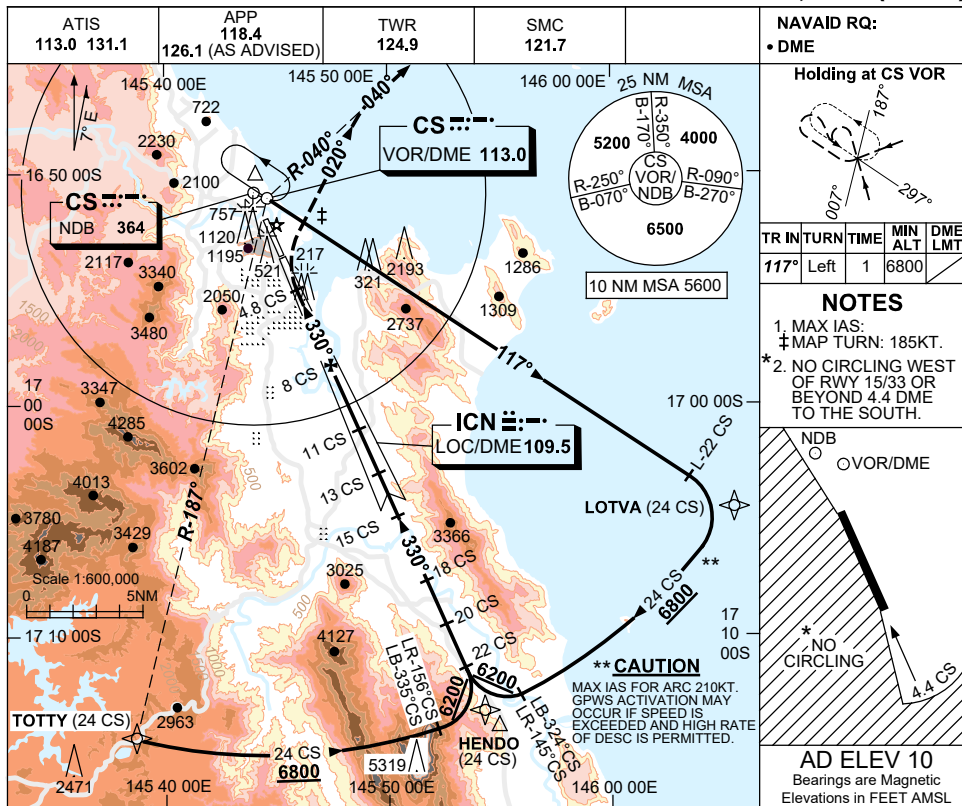


USE QNH

LOC-X RWY 33

30 NOV 2023

CAIRNS/CAIRNS INTL, QLD (YBCS)



NAVAID RQ:
• DME

Holding at CS VOR

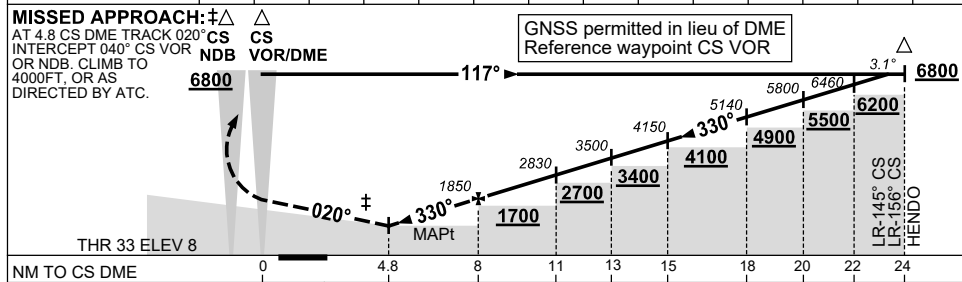
TR IN	TURN	TIME	MIN ALT	DME LMT
117°	Left	1	6800	

NOTES

- MAX IAS: ‡MAP TURN: 185KT.
- NO CIRCLING WEST OF RWY 15/33 OR BEYOND 4.4 DME TO THE SOUTH.

AD ELEV 10
Bearings are Magnetic
Elevations in FEET AMSL

DIST TO CS DME	4.8	6	7	8	9	10	11	13	15	18	20	22	23.1	
ALT (3.1° APCH PATH)	800	1190	1520	1850	2180	2510	2830	3500	4150	5140	5800	6460	6800	



CATEGORY	A	B	C	D
S-I LOC	NOT APPLICABLE		800 (790-4.5)	
CIRCLING *			800 (790-4.0)	1230 (1220-5.0)
ALTERNATE			(1290-6.0)	(1720-7.0)

- NOTES**
- CLOUR: SEE SPEC NOTICES.
 - USE OF LOC RESTR: W OF RWY CL-WI 30°.

Changes: LOTVA REPLACES BASIL, Editorial. BCSLZ02-177