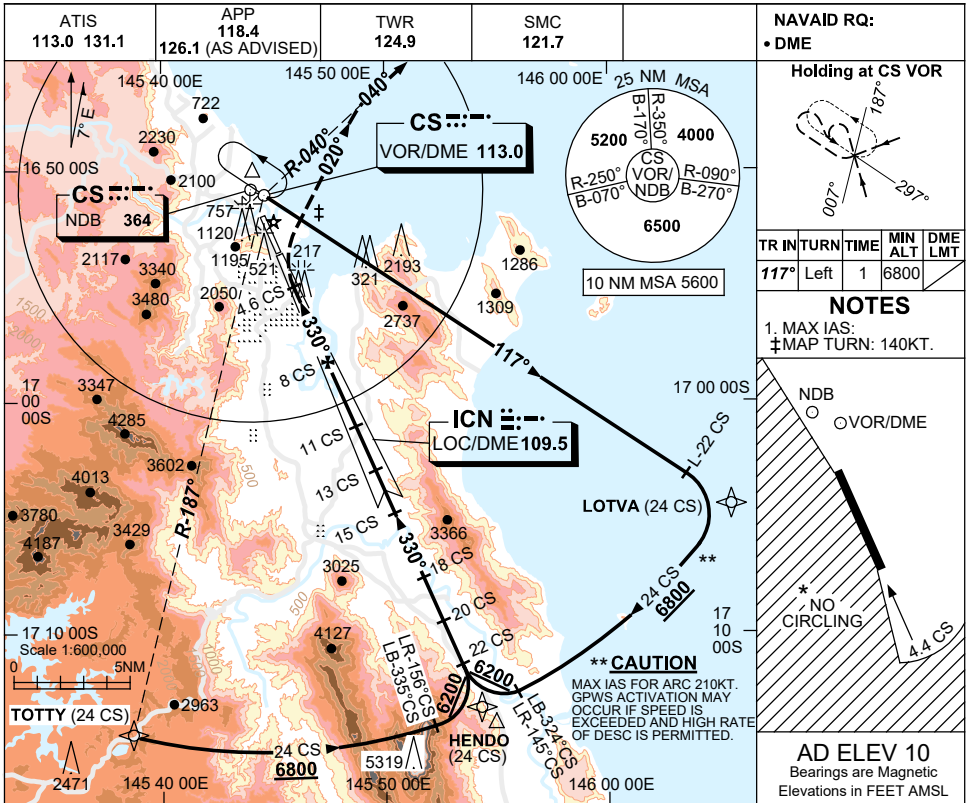


USE QNH

LOC-W RWY 33

30 NOV 2023

CAIRNS/CAIRNS INTL, QLD (YBCS)



Holding at CS VOR

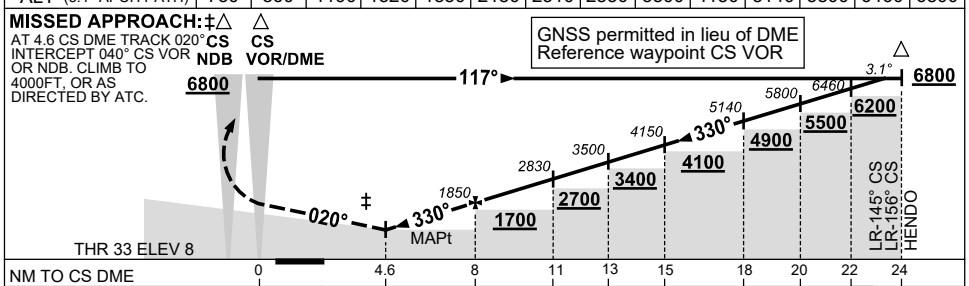
TR IN	TURN	TIME	MIN ALT	DME LMT
117°	Left	1	6800	

NOTES

- MAX IAS: ±MAP TURN: 140KT.

AD ELEV 10
Bearings are Magnetic
Elevations in FEET AMSL

DIST TO CS DME	4.6	5	6	7	8	9	10	11	13	15	18	20	22	23.1
ALT (3.1° APCH PATH)	730	860	1190	1520	1850	2180	2510	2830	3500	4150	5140	5800	6460	6800



NM TO CS DME	0	4.6	8	11	13	15	18	20	22	24
NM TO RWY 33 THR	0	2	5.4	10.4						

CATEGORY	A	B	C	D
S-I LOC	730 (720-4.1)		NOT APPLICABLE	
CIRCLING*	730 (720-2.4)			
ALTERNATE	(1220-4.4)			

- NOTES**
- NO CIRCLING WEST OF RWY 15/33 OR BEYOND 4.4 DME TO THE SOUTH.
 - COLOUR: SEE SPEC NOTICES.
 - USE OF LOC RESTR: W OF RWY CL-WI 30°.

Changes: LOTVA REPLACES BASIL, Editorial.

BCSLZ01-177