

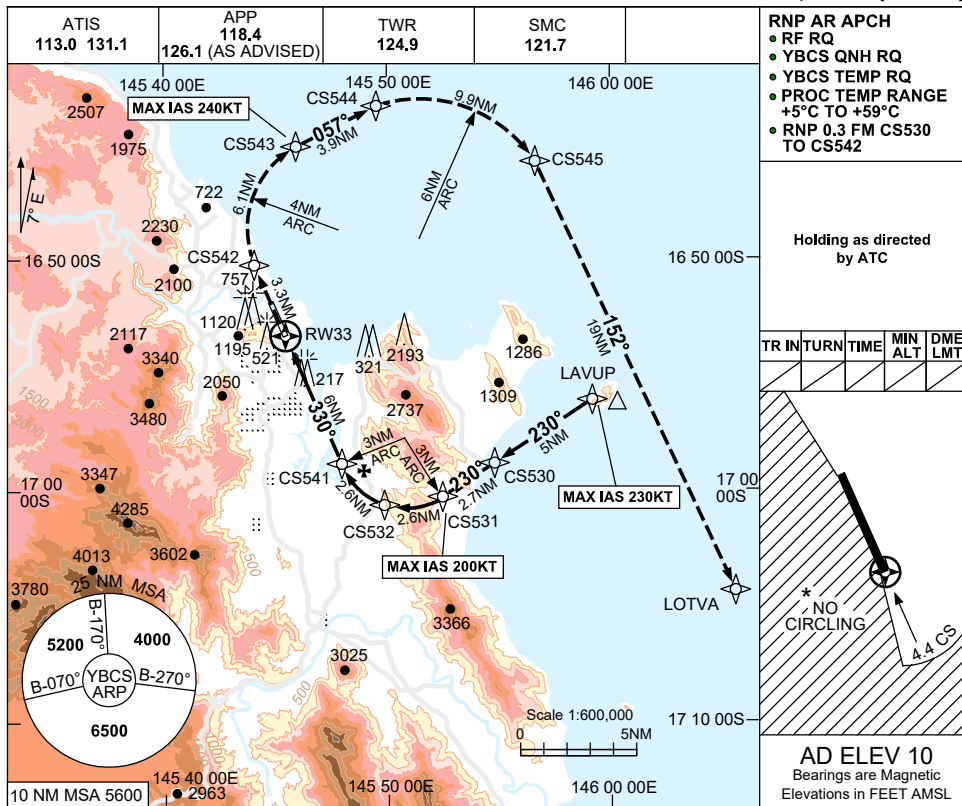
FOR CASA APPROVED OPERATORS ONLY

USE QNH

RNP X RWY 33 (AR)

30 NOV 2023

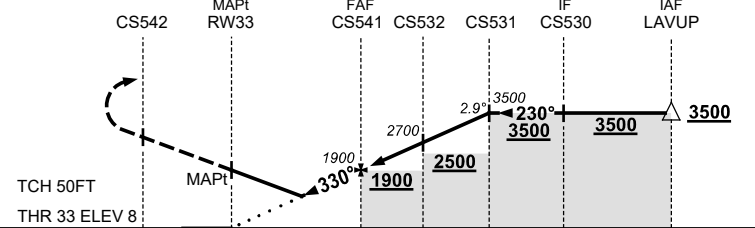
CAIRNS/CAIRNS INTL, QLD (YBCS)



NM TO NEXT WPT	RW33	2.1	2.2	2.5	3.3	4	5	CS541	1	2	CS532	1	2	CS531
ALT (2.9° APCH PATH)		710	740	830	1060	1290	1600	1900	2210	2520	2700	3010	3320	3500

MISSED APPROACH:

TRACK 330° to CS542, THEN VIA MISSED APCH TRACK TO LOTVA. CLIMB TO 6800FT OR AS DIRECTED BY ATC.



NM TO RW33	3.3	0	6	8.6	11.2	13.8	18.8
------------	-----	---	---	-----	------	------	------

NOTES

1. MAX IAS: INITIAL : 230KT. CS531 : 200KT. MAP UNTIL CS543: 240KT
- *2. NO CIRCLING WEST OF RWY 15/33 OR BEYOND 4.4 DME TO THE SOUTH (2NM S OF THR RWY 33).
3. COLOUR: SEE SPEC NOTICES.

CATEGORY	A	B	C	D
RNP (0.3) (2.5% MAP)		1060 (1050-5.0)		830 (820-4.8)
RNP (0.3) (5.0% MAP)		710 (700-4.1)		740 (730-4.3)
CIRCLING *	NOT AUTHORISED			
ALTERNATE	(1520-4.4)		(1520-6.0)	(1720-7.0)

Changes: LOTVA REPLACES BASIL, Editorial. BCSGN06-177