

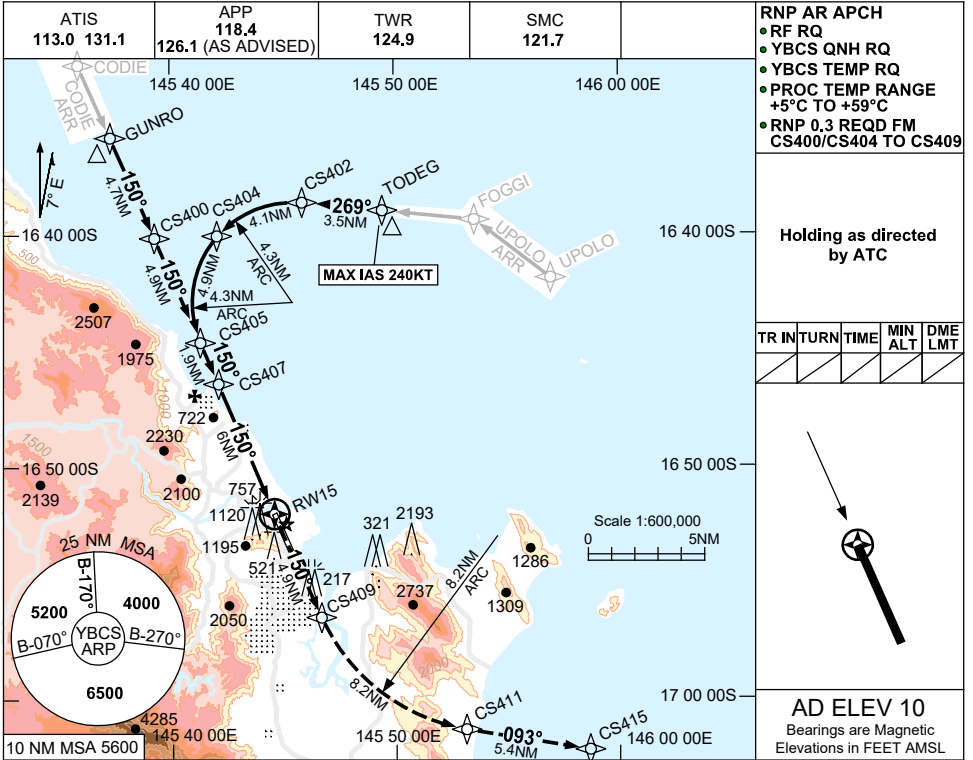
FOR CASA APPROVED OPERATORS ONLY

USE QNH

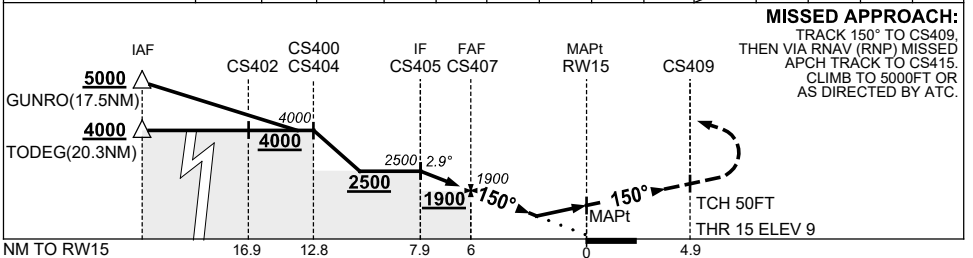
RNP X RWY 15 (AR)

24 MAR 2022

CAIRNS/CAIRNS INTL, QLD (YBCS)



NM TO NEXT WPT	CS405	1	CS407	5	4	3.3	2.5	2.1	2	RW15			
ALT (2.9° APCH PATH)	2500	2210	1900	1600	1290	1060	840	700	680				



CATEGORY	A	B	C	D
RNP (0.3) (2.5% MAP)		1060 (1051-5.0)		840 (831-3.9)
‡RNP (0.3) (5.0% MAP)		680 (671-2.9)		700 (691-3.0)
CIRCLING	NOT AUTHORISED			
ALTERNATE	(1520-4.4)		(1520-6.0)	(1720-7.0)

- NOTES**
- MAX IAS: TODRG : 240KT.
 - MIN MAP GRAD 5% TO 1400FT THEN 2.5%.
 - COLOUR: SEE SPEC NOTICES.

Changes: CHART TITLE, PBN SPECIFICATION BOX, Editorial.

BCSGN04-170