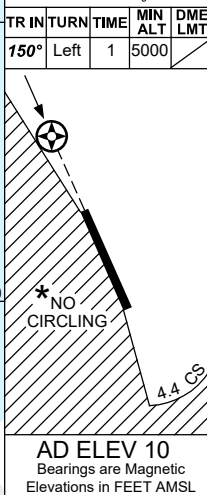
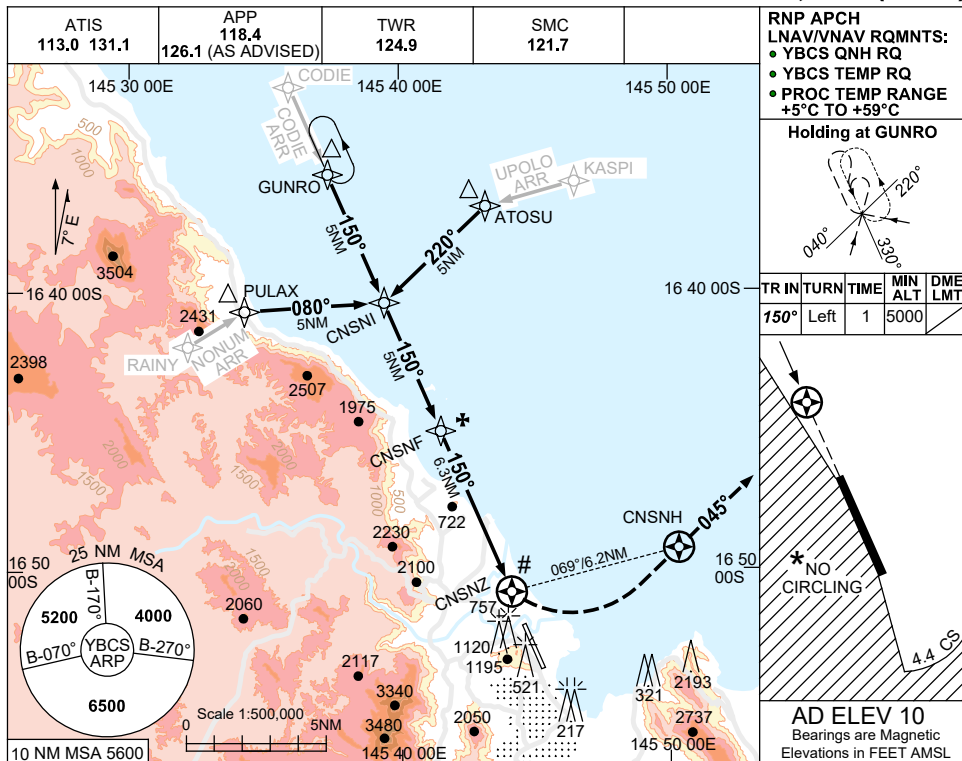
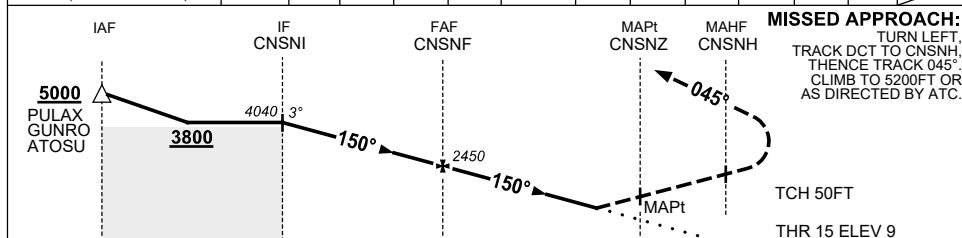


USE QNH RNP Y RWY 15 (LNAV/VNAV ONLY) CAIRNS/CAIRNS INTL, QLD (YBCS)

30 NOV 2023



NM TO NEXT WPT	CNSNI	4	3	2	1	CNSNF	5	4	3	2	1.8	1.3	CNSNZ
ALT (3° APCH PATH)	4040	3720	3400	3080	2770	2450	2040	1720	1410	1090	1010	880	



MISSED APPROACH:
TURN LEFT,
TRACK DCT TO CNSNH,
THENCE TRACK 045°.
CLIMB TO 5200FT OR
AS DIRECTED BY ATC.

TCH 50FT
THR 15 ELEV 9

NOTES

- # 1. MAX IAS:
INITIAL : 210KT.
MAP TURN: 190KT.
HOLDING : 230KT.
- * 2. NO CIRCLING WEST OF RWY 15/33 OR BEYOND 4.4 DME TO THE SOUTH (2NM S OF THR RWY 33).
- ‡ 3. WITHOUT ILS, LOC & DME.
- 4. COLOUR: SEE SPEC NOTICES.

CATEGORY	A	B	C	D
LNAV/VNAV(2.5% MAP)		1010 (1001-4.8)		
LNAV/VNAV(4.0% MAP)		880 (871-4.1)		
CIRCLING *	1030 (1020-2.4)	1030(1020-4.0)	1230(1220-5.0)	
ALTERNATE ‡	(1520-4.4)	(1520-6.0)	(1720-7.0)	

Changes: KASPI REPLACES SUNNY, Editorial. BCSGN03-177