

**STANDARD INSTRUMENT DEPARTURE (SID)  
RWY 15 NONUM ONE (NON-JET)  
CAIRNS/CAIRNS INTL, QLD (YBCS)**

**13 JUN 2024**

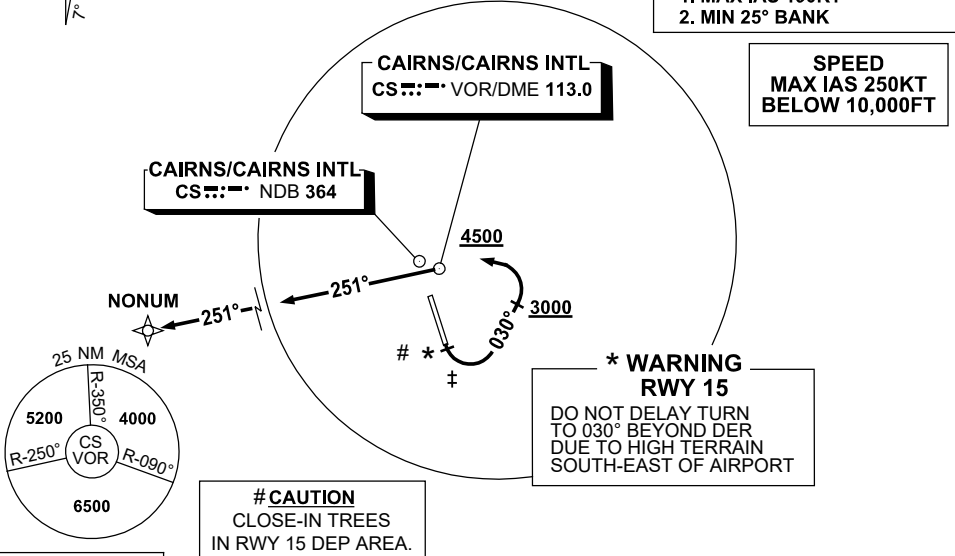
ATIS 113.0 131.1	ACD 128.75	SMC 121.7	TWR 124.9	DEP 118.4	DEP 126.1 (AS ADVISED)	Bearings are Magnetic Elevations in FEET AMSL
---------------------	---------------	--------------	--------------	--------------	---------------------------	--

NOT TO SCALE



GNSS permitted in lieu of DME  
Reference waypoint CS VOR

‡ **SPEED AND BANK ANGLE**  
THE FOLLOWING LIMITS ARE  
RQ UNTIL TRACKING 030°  
1. MAX IAS 190KT  
2. MIN 25° BANK



10 NM MSA 5600

**NONUM ONE DEPARTURE**

- GRAD 4% to 600ft then 3.3%
  - Track 150°
  - \* At the earlier of 400ft or DER (2.6 CS DME) turn LEFT track 030°
  - AT or ABV 3000ft turn LEFT
  - Track to CS VOR/NDB
- Requirement: reach 4500ft by CS VOR/NDB
- Track 251° to NONUM