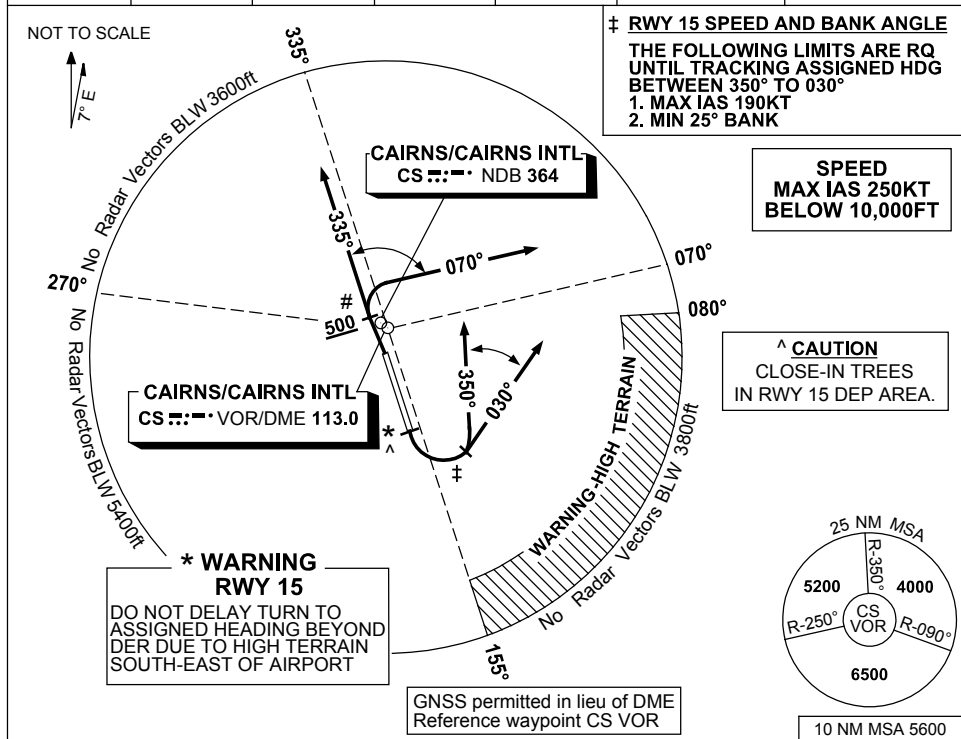


**STANDARD INSTRUMENT DEPARTURES (SID)  
CAIRNS TWO DEPARTURE (RADAR)  
CAIRNS/CAIRNS INTL, QLD (YBCS)**

**13 JUN 2024**

ATIS 113.0 131.1	ACD 128.75	SMC 121.7	TWR 124.9	DEP 118.4	DEP 126.1 (AS ADVISED)	Bearings are Magnetic Elevations in FEET AMSL
---------------------	---------------	--------------	--------------	--------------	---------------------------	--



**CAIRNS TWO DEPARTURE (RADAR)**

**RWY 15**

- GRAD 4% to 600ft then 3.3%
- Track 150°
- \* At the earlier of 400ft or DER (2.6 DME) turn LEFT to assigned heading (between 350° to 030°)
- When directed, contact departures for radar vectors

**RWY 33**

- # • MAX IAS 220KT
- GRAD 4.6% to 2000ft then 3.3%
- Track 330°
- AT or ABV 500ft, but not before DER, turn to assigned heading (between 335° to 070°)
- When directed, contact departures for radar vectors

**COMMUNICATIONS FAILURE PROCEDURE**

On recognition of communications failure

- Squawk 7600
- Maintain last assigned vector for two minutes and, if necessary, climb to minimum safe altitude to maintain terrain clearance, then
- Proceed in accordance with the latest ATC route clearance acknowledged

Changes: CAUTION NOTE.

BCSDP02-179