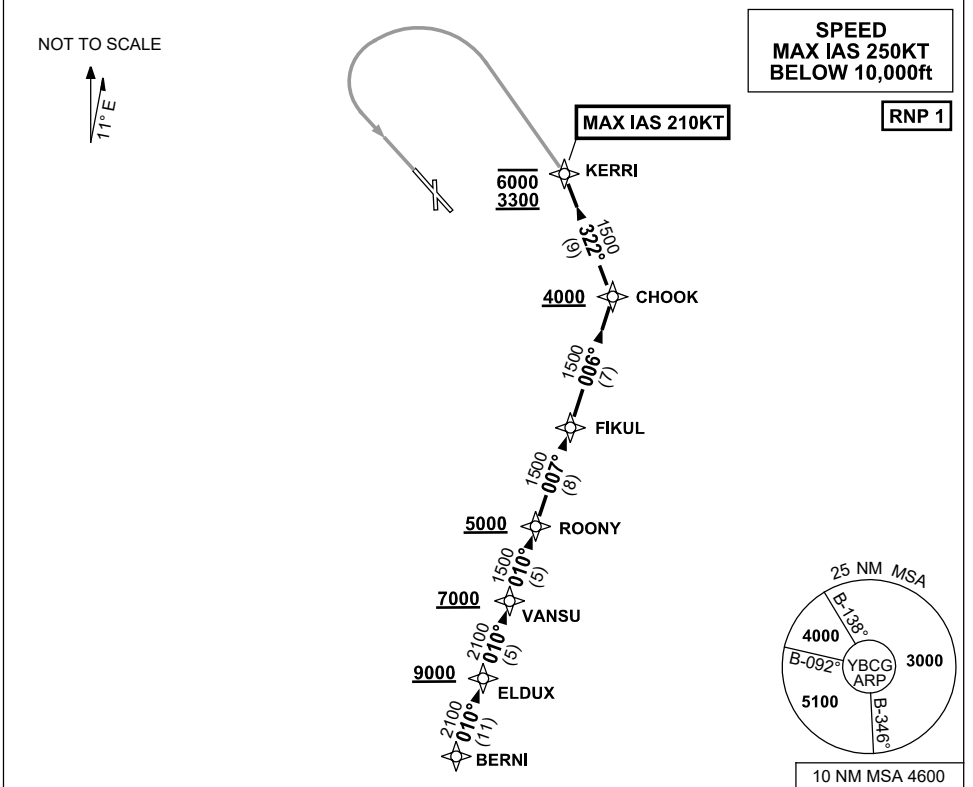


**STANDARD ARRIVAL ROUTE (STAR)  
BERNI THREE YANKEE ARRIVAL (RNAV)  
GOLD COAST, QLD (YBCG)**

**21 MAR 2024**

ATIS 112.3 (H24) 134.5 (TWR HR)	APP BN 123.5	TWR 118.7	SMC 121.8	ACD 128.75	FIA (AH) BN CEN 119.5	AWIS (AH) 134.5	CTAF+AFRU (AH) AFRU+PAL (AH) 118.7	Bearings are Magnetic Elevations in FEET AMSL
------------------------------------	-----------------	--------------	--------------	---------------	--------------------------	--------------------	--	--



**ARRIVAL:      BERNI THREE YANKEE**

- From BERNI track 010° to ELDUX  
    **Cross** ELDUX AT or ABV 9000ft
  - Track 010° to VANSU  
    **Cross** VANSU AT or ABV 7000ft
  - Track 010° to ROONY  
    **Cross** ROONY AT or ABV 5000ft
- RWY 14:**
- From ROONY, turn LEFT track 007° to FIKUL
  - Track 006° to CHOOK  
    **Cross** CHOOK AT or ABV 4000ft
  - Turn LEFT, track 322° to KERRI  
    **Cross** KERRI BTN 3300ft and 6000ft  
    MAX IAS 210KT from KERRI
  - Track via RNP Y RWY 14 (AR)

**COMMUNICATIONS FAILURE PROCEDURE**

**IF ABLE CTC GOLD COAST ATC ON TEL : 07 55995990**

- Squawk 7600, comply with vertical navigation requirements, but not below MSA.
- Track via the latest STAR clearance to the nominated runway, then fly the most suitable approach in accordance with ERSA EMERG Section 1.5.

Changes: VALIDITY INDICATOR, ALT RQMNTS AT KERRI, IAS AT KERRI, Editorial.

BCGSR08-178