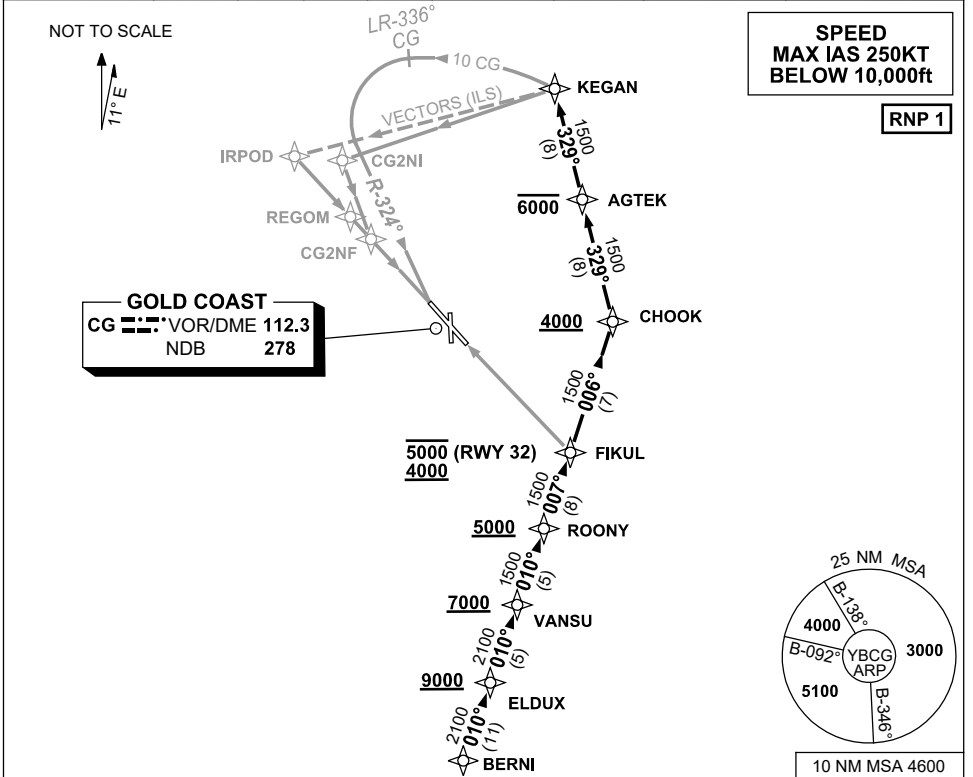


**STANDARD ARRIVAL ROUTE (STAR)  
BERNI THREE ALPHA ARRIVAL (RNAV)  
GOLD COAST, QLD (YBCG)**

21 MAR 2024

ATIS 112.3 (H24) 134.5 (TWR HR)	APP BN 123.5	TWR 118.7	SMC 121.8	ACD 128.75	FIA (AH) BN CEN 119.5	AWIS (AH) 134.5	CTAF+AFRU (AH) AFRU+PAL (AH) 118.7	Bearings are Magnetic Elevations in FEET AMSL
------------------------------------	-----------------	--------------	--------------	---------------	--------------------------	--------------------	------------------------------------------	--------------------------------------------------



**ARRIVAL: BERNI THREE ALPHA**

- From BERNI track 010° to ELDUX  
**Cross** ELDUX AT or ABV 9000ft
- Track 010° to VANSU  
**Cross** VANSU AT or ABV 7000ft
- Track 010° to ROONY  
**Cross** ROONY AT or ABV 5000ft

**RWY 32:**

- From ROONY turn LEFT track 007° to FIKUL  
**Cross** FIKUL BTN 4000ft and 5000ft
- Track via RNP X RWY 32 (AR) or RNP Z RWY 32

**RWY 14:**

- From ROONY turn LEFT track 007° to FIKUL
- Turn LEFT, track 006° to CHOOK  
**Cross** CHOOK AT or ABV 4000ft
- Turn LEFT, track 329° to AGTEK  
**Cross** AGTEK AT or BLW 6000ft
- Track 329° to KEGAN
- Track via RNP Z RWY 14, NDB or VOR RWY 14 or radar vectors for ILS-Z RWY 14 or LOC-Z RWY 14

**COMMUNICATIONS FAILURE PROCEDURE**

**IF ABLE CTC GOLD COAST ATC ON TEL : 07 55995990**

- Squawk 7600, comply with vertical navigation requirements, but not below MSA.
- Track via the latest STAR clearance to the nominated runway, then fly the most suitable approach in accordance with ERSA EMERG Section 1.5.