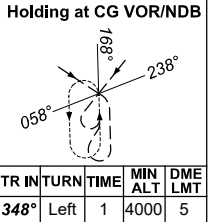
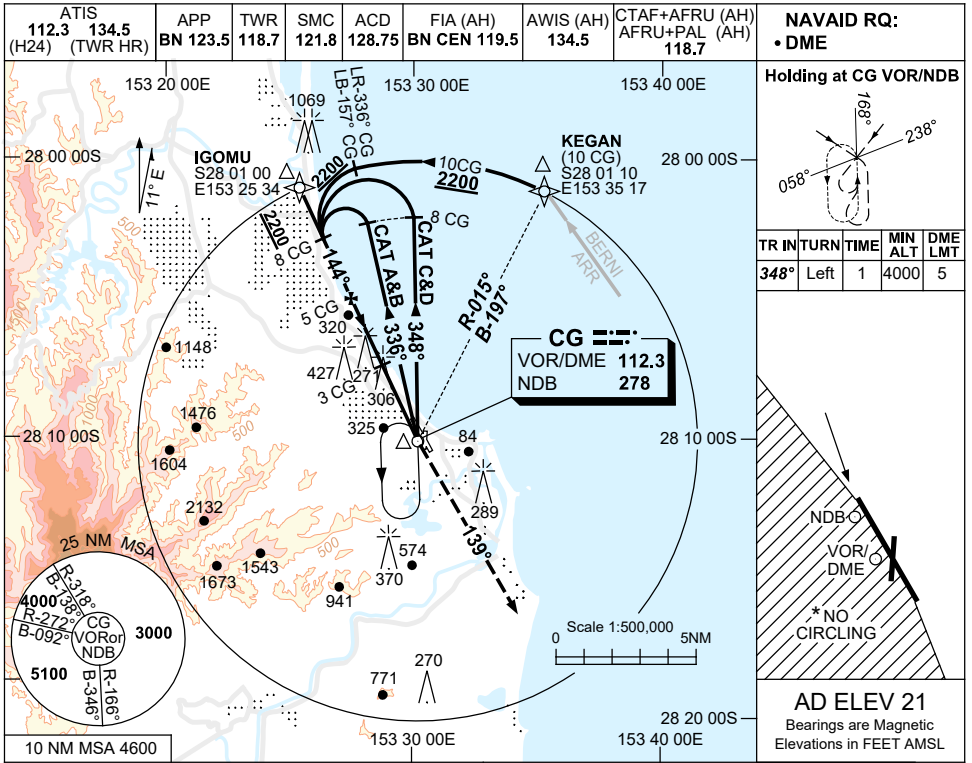


USE QNH

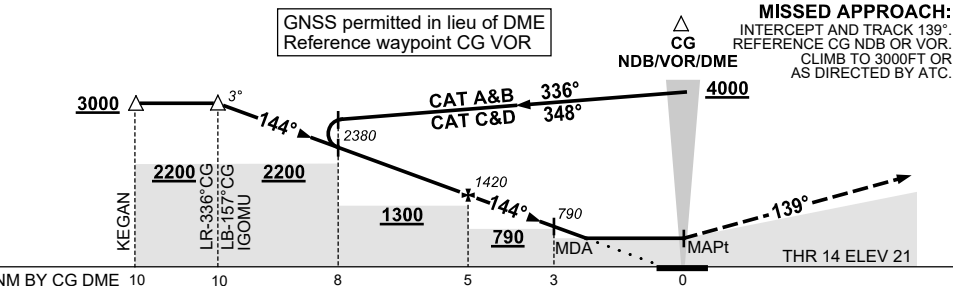
NDB or VOR RWY 14

GOLD COAST, QLD (YBCG)

27 FEB 2020



DIST BY CG DME	10	9	8	7	6	5	4	3	2.8
ALT (3° APCH PATH)	3000	2700	2380	2060	1740	1420	1110	790	720



NOTES

- MAX IAS:
INITIAL : 210KT.
(BASE TURN PROC ONLY)
HOLDING: 210KT
- NO CIRCLING WEST OF RWY 14/32.
- ACFT MAY BE RADAR VECTORED TO FNA.
- COLOUR: SEE SPEC NOTICES.

CATEGORY	A	B	C	D
S-I NDB/DME or VOR/DME	720 (699-4.0)			
CIRCLING *	860 (839-2.4)	960 (939-4.0)	960 (939-5.0)	
ALTERNATE	(1339-4.4)	(1439-6.0)	(1439-7.0)	

Changes: MDA, DIST/ALT TABLE, MINIMA, GRID COORD FORMAT, STAR TRANSITION. BCGNB01-162