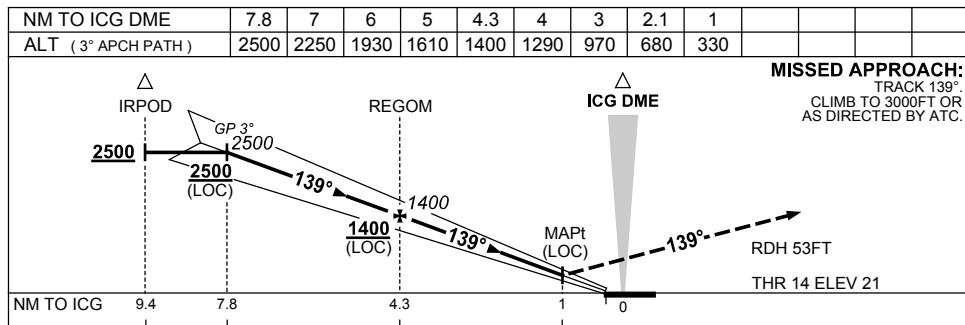
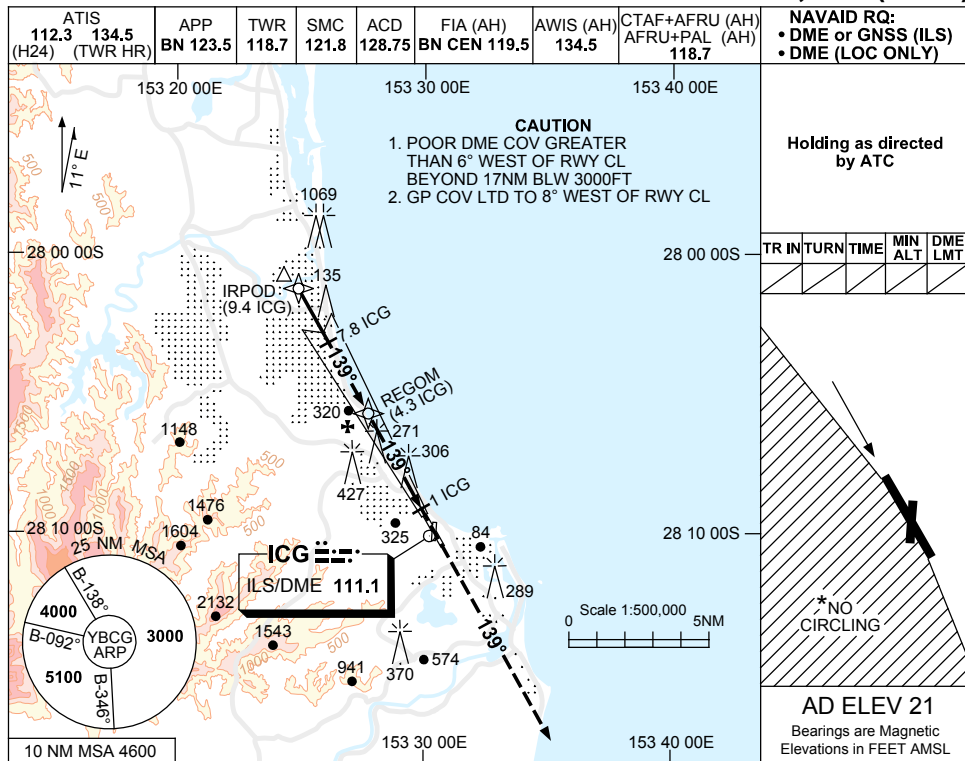


USE QNH

ILS-Z or LOC-Z RWY 14

GOLD COAST, QLD (YBCG)

23 MAY 2019



CATEGORY	A	B	C	D
S-I ILS	330 (309-1.7) (VIS 1.5 WITH ACTUAL QNH)			
S-I LOC	680 (659-3.7)			
CIRCLING *	860 (839-2.4)	960 (939-4.0)		960 (939-5.0)
ALTERNATE	(1339-4.4)		(1439-6.0) (1439-7.0)	

- NOTES**
- MAX IAS:
IRPOD : 185KT.
 - * NO CIRCLING WEST OF RWY 14/32.
 - COLOUR: SEE SPEC NOTICES.

Changes: FROM SUP H04/19.

BCGI01-159