

**FOR CASA APPROVED STANDARD INSTRUMENT DEPARTURE (SID)  
OPERATORS ONLY RW14 RNAV (RNP 0.3) CUDGN FOUR**

**2 DEC 2021**

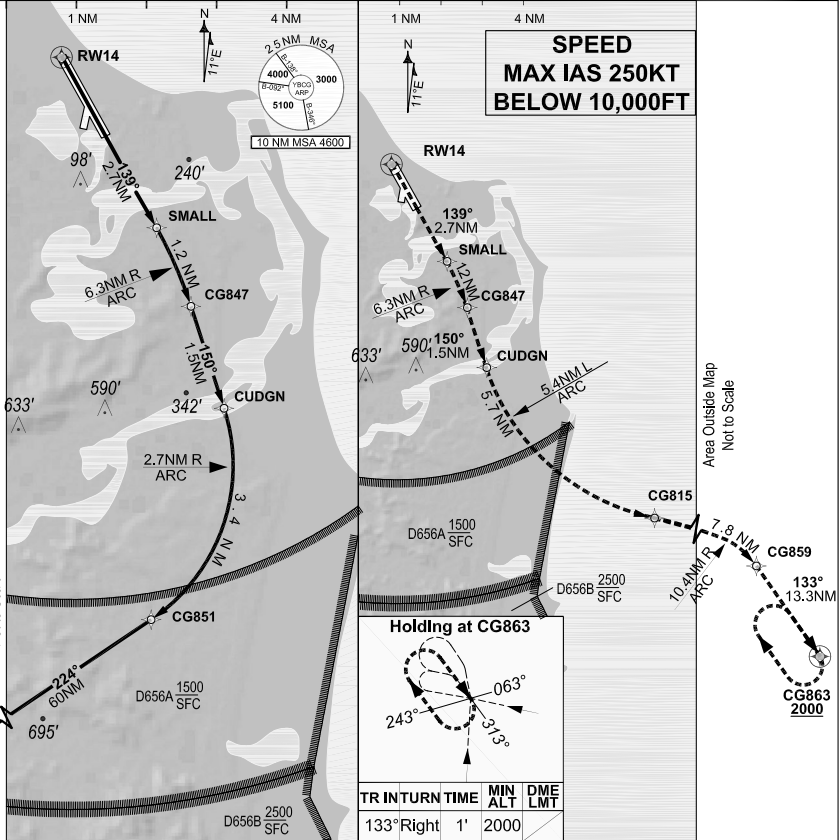
**USE QNH**

**GOLD COAST, QLD (YBCG)**

ATIS <b>112.3 134.5</b> (H24) (TWR HR)	APP <b>BN 123.5</b>	TWR <b>118.7</b>	SMC <b>121.8</b>	ACD <b>128.75</b>	FIA (AH) <b>BN CEN 119.5</b>	AWIS (AH) <b>134.5</b>	CTAF+AFRU (AH) AFRU+PAL (AH) <b>118.7</b>	Bearings are Magnetic Elevations in FEET AMSL
--	------------------------	---------------------	---------------------	----------------------	---------------------------------	---------------------------	---	--

GE PROPRIETARY AND CONFIDENTIAL

202106091719 COPYRIGHT 2021 NAVERUS, INC. USA



**RW 14 CUDGN DEPARTURE**

**RF Required**

**RWY 14**

- Track 139° to SMALL.
- Turn RIGHT via the RNAV (RNP) track to CG847.
- Track 150° to CUDGN.
- Turn RIGHT via the RNAV (RNP) track to CG851.
- Track 224° to APAGI, thence as cleared.

**RNAV (RNP 0.3) ENGINE OUT DEPARTURE**

**RWY 14**

**ENGINE FAILURE PRIOR TO CUDGN**

- Climb to 2000FT.
- Fly the RNAV (RNP) ENGINE OUT DEPARTURE track to CG863.
- Hold at CG863.
- MAX holding IAS 230KT.

**ENGINE FAILURE AFTER CUDGN**

- Continue via the RNAV (RNP) departure track to APAGI.

TR IN TURN	TIME	MIN ALT	DME LMT
133° Right	1'	2000	

Changes: From SUP H55/21.

BCGDP04-169

**DO NOT USE FOR NAVIGATION**

Prepared by GE Aviation

