

**FOR CASA APPROVED STANDARD INSTRUMENT DEPARTURE (SID)
OPERATORS ONLY RW32 RNAV (RNP 0.3) BURLI FIVE
GOLD COAST, QLD (YBCG)**

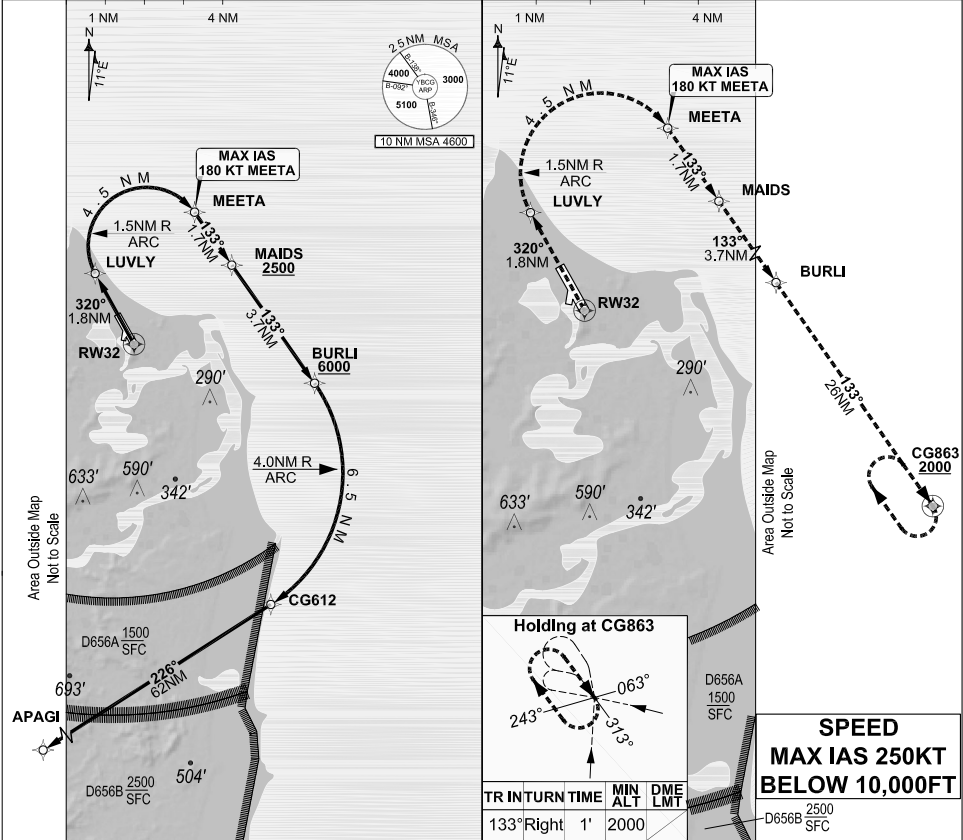
2 DEC 2021

USE QNH

GOLD COAST, QLD (YBCG)

GE PROPRIETARY AND CONFIDENTIAL

ATIS 112.3 134.5 (H24) (TWR HR)	APP BN 123.5	TWR 118.7	SMC 121.8	ACD 128.75	FIA (AH) BN CEN 119.5	AWIS (AH) 134.5	CTAF+AFRU (AH) AFRU+PAL (AH) 118.7	Bearings are Magnetic Elevations in FEET AMSL
--	------------------------	---------------------	---------------------	----------------------	---------------------------------	---------------------------	---	--



RW 32 BURLI DEPARTURE
GRAD 9.3% (AE) to BURLI at 6000 FT.

RF Required

RWY 32

- Track 320° to LUVLY.
- Turn RIGHT via the RNAV (RNP) track to MEETA.
- **MAX IAS 180KT** until MEETA.
- Track 133° to MAIDS.
- **CROSS** MAIDS AT or ABV 2500FT.
- Track 133° to BURLI.
- **CROSS** BURLI AT or ABV 6000FT.
- Turn RIGHT via the RNAV (RNP) track to CG612.
- Track 226° to APAGI, thence as cleared.

RNAV (RNP 0.3) ENGINE OUT DEPARTURE

RWY 32

ENGINE FAILURE PRIOR TO BURLI

- Climb to 2000FT.
- **MAX IAS 180KT** until MEETA
- Fly the RNAV (RNP) ENGINE OUT DEPARTURE track to CG863.
- Hold at CG863.
- **MAX** holding IAS 230KT.

ENGINE FAILURE AFTER BURLI

- Continue via the RNAV (RNP) BURLI track to APAGI.

TR IN	TURN	TIME	MIN	DME	ALT	LMT
133°	Right	1'	2000			

SPEED
MAX IAS 250KT
BELOW 10,000FT

Changes: From SUP H55/21.

BCGDP03-169

DO NOT USE FOR NAVIGATION

Prepared by GE Aviation



202106091714 COPYRIGHT 2021 NAVERUS, INC. USA