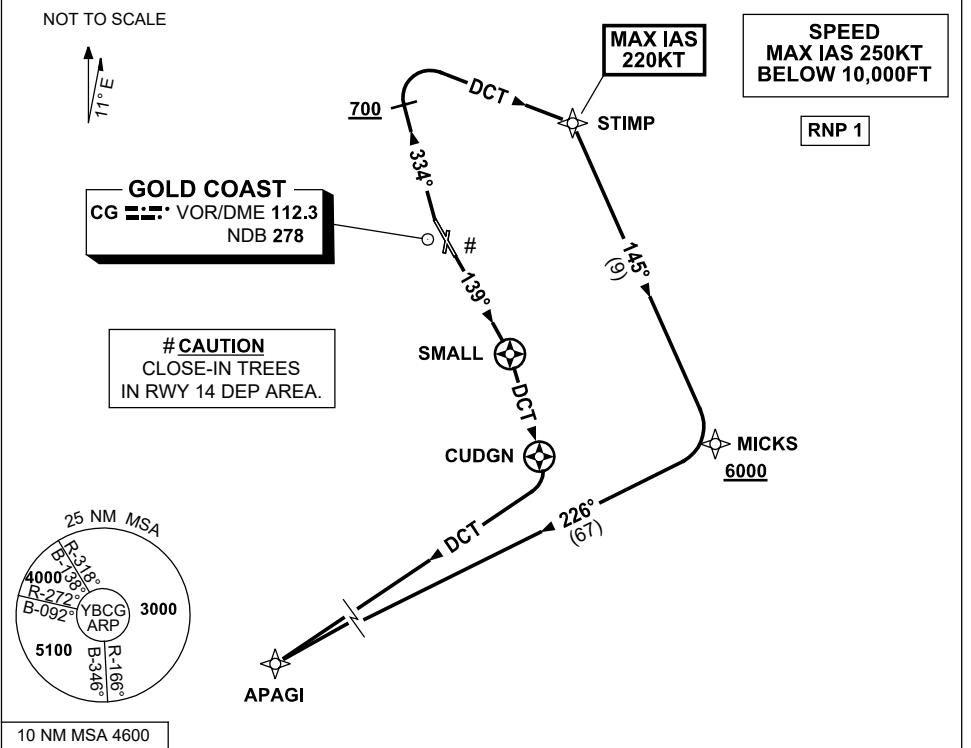


STANDARD INSTRUMENT DEPARTURE (SID)
RWY 14/32 SOUTH (JET) (RNAV)
GOLD COAST, QLD (YBCG)

13 JUN 2024

ATIS 112.3 (H24) 134.5 (TWR HR)	APP BN 123.5	TWR 118.7	SMC 121.8	ACD 128.75	FIA (AH) BN CEN 119.5	AWIS (AH) 134.5	CTAF+AFRU (AH) AFRU+PAL (AH) 118.7	Bearings are Magnetic Elevations in FEET AMSL
------------------------------------	-----------------	--------------	--------------	---------------	--------------------------	--------------------	--	--



APAGI FIVE DEPARTURE

RWY 14 #

- GRAD 4.8% to 1500ft then 3.3% (6.7% to 7000ft, then 6% to 7500ft)
- Track 139° to SMALL
- Turn RIGHT, track DCT to CUDGN
- Turn RIGHT, track DCT to APAGI, then as cleared

RWY 32

- **MAX IAS 220KT UNTIL STIMP**
GRAD 5.3% to 700ft then 3.3% (6.3% to 2000ft)
- Not before DER turn RIGHT track 334°
- AT or ABV 700ft turn RIGHT track DCT to STIMP
- Turn RIGHT, track 145° to MICKS
Cross MICKS AT or ABV 6000ft
- Turn RIGHT, track 226° to APAGI, then as cleared