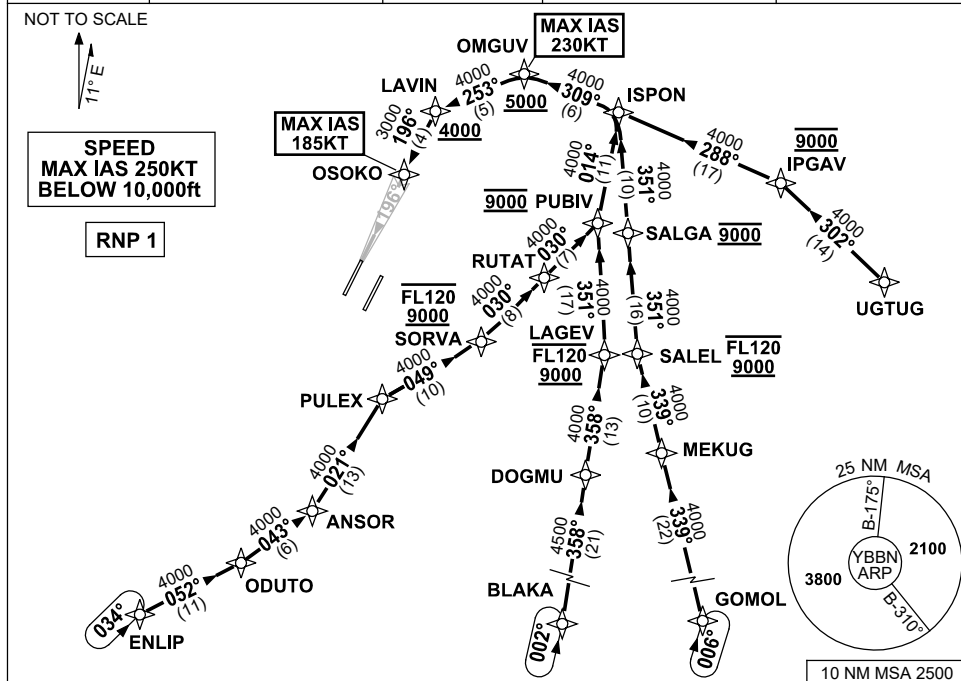


# STANDARD INSTRUMENT ARRIVAL (STAR) ISPON TWO ARRIVAL (RNAV) RWY 19R BRISBANE, QLD (YBBN)

5 SEP 2024

ATIS 113.2 125.5	APP NORTH 124.7 SOUTH 125.6 FINALS 119.25	TWR 01R/19L 120.5 01L/19R 118.0	SMC DOM 121.7 SOUTH 122.25	Bearings are Magnetic Elevations in FEET AMSL
---------------------	--	---------------------------------------	----------------------------------	--



**TRANSITIONS:**

- ENLIP**
- From ENLIP, track 052° to ODUTO
  - Turn LEFT, track 043° to ANSOR
  - Turn LEFT, track 021° to PULEX
  - Turn RIGHT, track 049° to SORVA
  - Cross** SORVA BTN 9000ft and FL120
  - Turn LEFT, track 030° to RUTAT
  - Track 030° to PUBIV
  - Cross** PUBIV AT 9000ft
  - Turn LEFT, track 014° to ISPON
- UGTUG**
- From UGTUG, track 302° to IPGAV
  - Cross** IPGAV AT 9000ft
  - Turn LEFT, track 288° to ISPON

- BLAKA**
- From BLAKA, track 358° to DOGMU
  - Track 358° to LAGEV
  - Cross** LAGEV BTN 9000ft and FL120
  - Turn LEFT, track 351° to PUBIV
  - Cross** PUBIV AT 9000ft
  - Turn RIGHT, track 014° to ISPON
- GOMOL**
- From GOMOL, track 339° to MEKUG
  - Track 339° to SALEL
  - Cross** SALEL BTN 9000ft and FL120
  - Turn RIGHT, track 351° to SALGA
  - Cross** SALGA AT 9000ft
  - Track 351° to ISPON

**ARRIVAL: ISPON TWO**

- RWY 19R**
- From ISPON, track 309° to OMGUV
  - Cross** OMGUV AT or ABV 5000ft
  - MAX IAS 230KT AT OMGUV

- Turn LEFT, track 253° to LAVIN
- Cross** LAVIN AT or ABV 4000ft
- Turn LEFT, track 196° to OSOKO for ILS, RNP Z or LOC RWY 19R approach.
- MAX IAS 185KT AT OSOKO

**COMMUNICATIONS FAILURE: PROCEDURE IN IMC  
IF ABLE CTC BN ATC ON TEL: (07) 3866-3694**

- Squawk 7600, comply with vertical navigation requirements, but not below MSA.
- Track via the latest STAR clearance to the nominated runway, then fly the most suitable approach in accordance with ERSA EMERG Section 1.5.