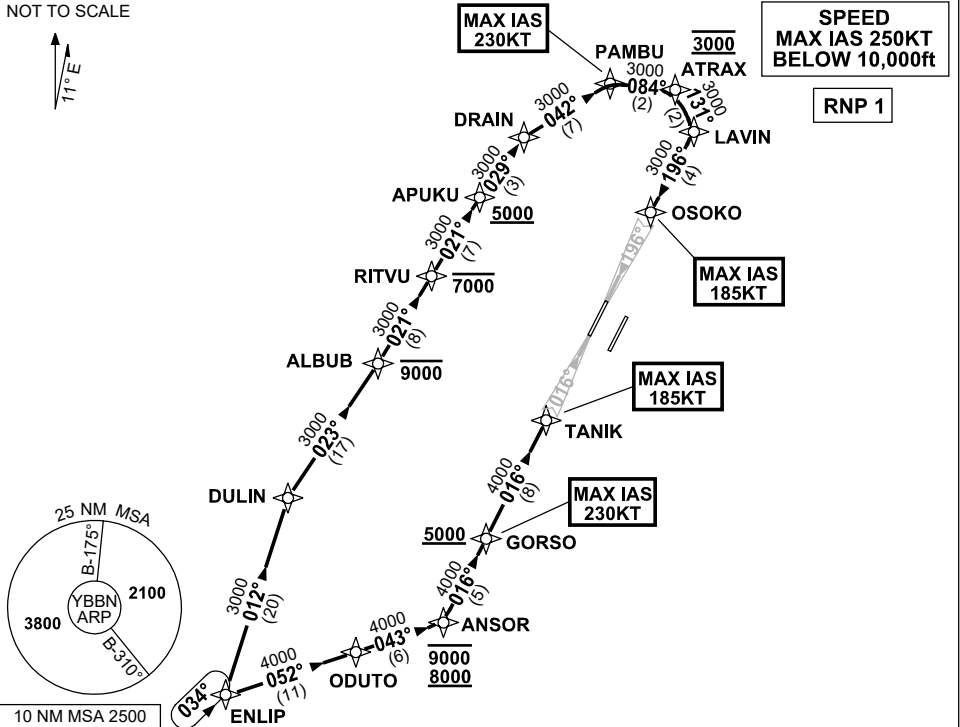


**STANDARD INSTRUMENT ARRIVAL (STAR)
ENLIP TWO ALPHA ARRIVAL (RNAV) RWY 01L/19R
BRISBANE, QLD (YBBN)**

21 MAR 2024

ATIS 113.2 125.5	APP NORTH 124.7 SOUTH 125.6 FINALS 119.25	TWR 01L/19R 118.0 01R/19L 120.5	SMC NORTH 124.05 DOM 121.7 SOUTH 122.25	Bearings are Magnetic Elevations in FEET AMSL
---------------------	----------------------------------------------------	---------------------------------------	--------------------------------------------------	--------------------------------------------------

NOT TO SCALE



ARRIVAL: ENLIP TWO ALPHA

- RWY 01L:**
- From ENLIP, track 052° to ODUTO
 - Turn LEFT, track 043° to ANSOR
Cross ANSOR BTN 8000ft and 9000ft
 - Turn LEFT, track 016° to GORSO
Cross GORSO AT or ABV 5000ft
MAX IAS 230KT AT GORSO
 - Track 016° to TANIK for ILS, RNP Z or LOC RWY 01L approach
MAX IAS 185KT AT TANIK

- RWY 19R:**
- From ENLIP, track 012° to DULIN
 - Turn RIGHT, track 023° to ALBUB
Cross ALBUB AT or BLW 9000ft
 - Turn LEFT, track 021° to RITVU
Cross RITVU AT or BLW 7000ft
 - Track 021° to APUKU
Cross APUKU AT or ABV 5000ft
 - Turn RIGHT, track 029° to DRAIN
 - Turn RIGHT, track 042° to PAMBU
MAX IAS 230KT AT PAMBU
 - Turn RIGHT, track 084° to ATRAX
Cross ATRAX AT 3000ft
 - Turn RIGHT, track 131° to LAVIN
 - Turn RIGHT, track 196° to OSOKO for ILS, RNP Z or LOC RWY 19R approach
MAX IAS 185KT AT OSOKO

**COMMUNICATIONS FAILURE: PROCEDURE IN IMC
IF ABLE CTC BN ATC ON TEL: (07) 3866-3694**

- Squawk 7600, comply with vertical navigation requirements, but not below MSA.
- Track via the latest STAR clearance to the nominated runway, then fly the most suitable approach in accordance with ERSA EMERG Section 1.5.

Changes: PROC NR.

BBNSR51-178