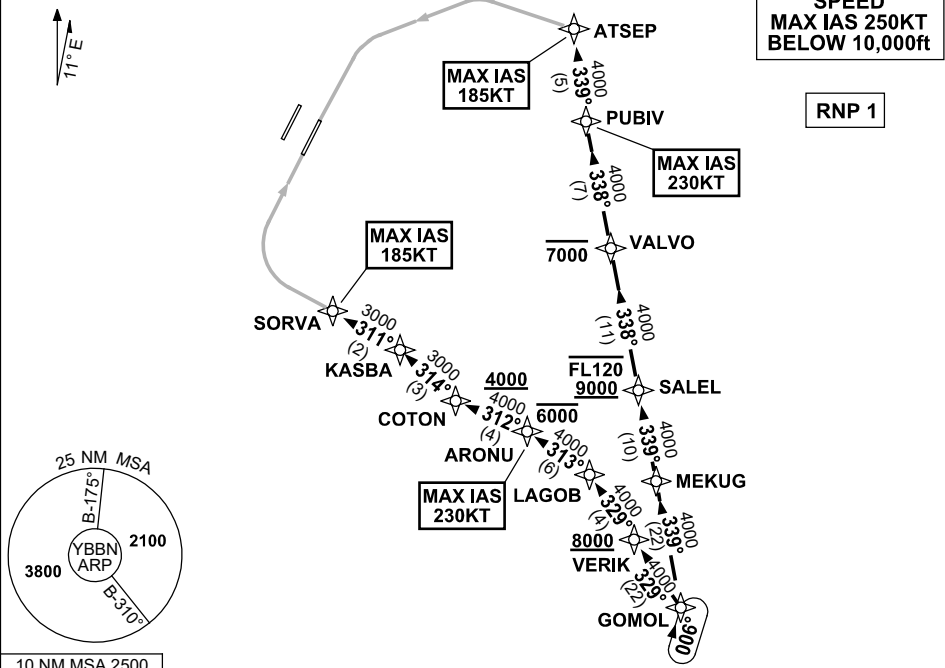


**STANDARD INSTRUMENT ARRIVAL (STAR)
GOMOL THREE X-RAY ARRIVAL (RNAV) RWY 01R/19L
BRISBANE, QLD (YBBN)**

21 MAR 2024

ATIS 113.2 125.5	APP NORTH 124.7 SOUTH 125.6 FINALS 119.25	TWR 01R/19L 120.5 01L/19R 118.0	SMC DOM 121.7 SOUTH 122.25	Bearings are Magnetic Elevations in FEET AMSL
---------------------	--	---------------------------------------	----------------------------------	--

NOT TO SCALE



ARRIVAL: GOMOL THREE X-RAY

RWY 01R:

- From GOMOL, track 329° to VERIK
Cross VERIK AT or ABV 8000ft
- Track 329° to LAGOB
- Turn LEFT, track 313° to ARONU
Cross ARONU AT or BLW 6000ft
MAX IAS 230KT AT ARONU
- Turn LEFT, track 312° to COTON
Cross COTON AT or ABV 4000ft
- Turn RIGHT, track 314° to KASBA
- Turn LEFT, track 311° to SORVA for the
RNP X or RNP S RWY 01R (AR) approach
MAX IAS 185KT AT SORVA

RWY 19L:

- From GOMOL, track 339° to MEKUG.
- Track 339° to SALEL
Cross SALEL BTN 9000ft and FL120
- Track 338° to VALVO
Cross VALVO AT or BLW 7000ft
- Track 338° to PUBIV
MAX IAS 230KT AT PUBIV
- Turn RIGHT, track 339° to ATSEP for
RNP X or RNP S RWY 19L (AR) approach
MAX IAS 185KT AT ATSEP

**COMMUNICATIONS FAILURE: PROCEDURE IN IMC
IF ABLE CTC BN ATC ON TEL: (07) 3866-3694**

- Squawk 7600, comply with vertical navigation requirements, but not below MSA.
- Track via the latest STAR clearance to the nominated runway, then fly the most suitable approach in accordance with ERSA EMERG Section 1.5.

Changes: PROC NR, RNP S RWY 01R/19L (AR).

BBNSR49 -178