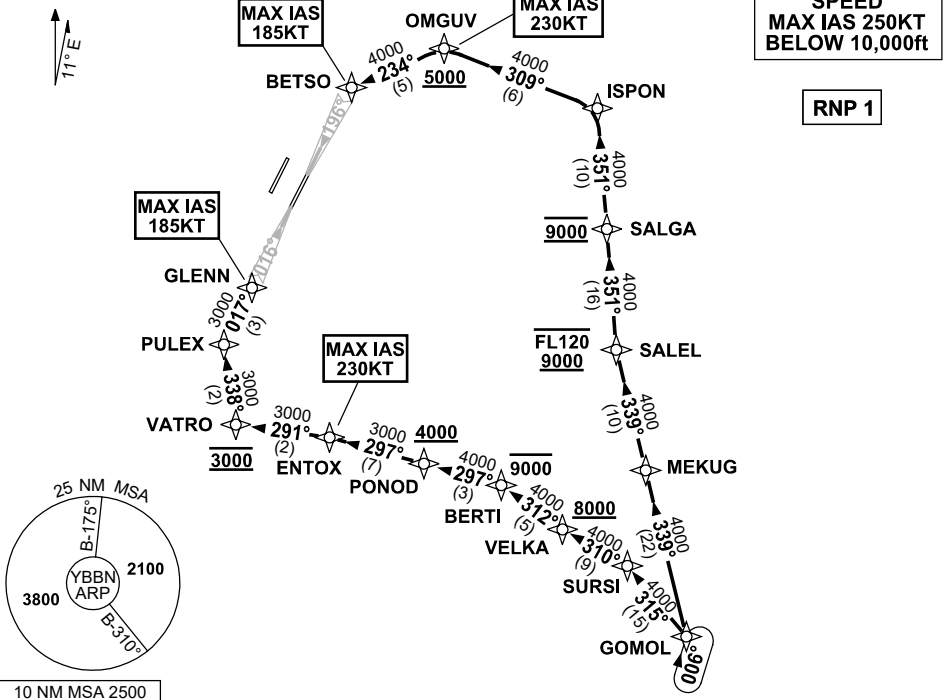


**STANDARD INSTRUMENT ARRIVAL (STAR)
GOMOL THREE ALPHA ARRIVAL (RNAV) RWY 01R/19L
BRISBANE, QLD (YBBN)**

21 MAR 2024

ATIS 113.2 125.5	APP NORTH 124.7 SOUTH 125.6 FINALS 119.25	TWR 01R/19L 120.5 01L/19R 118.0	SMC DOM 121.7 SOUTH 122.25	Bearings are Magnetic Elevations in FEET AMSL
---------------------	--	---------------------------------------	----------------------------------	--

NOT TO SCALE



**ARRIVAL: GOMOL THREE ALPHA
RWY 01R:**

- From GOMOL, track 315° to SURSI
- Turn LEFT, track 310° to VELKA
Cross VELKA AT or ABV 8000ft
- Turn RIGHT, track 312° to BERTI
Cross BERTI AT or BLW 9000ft
- Turn LEFT, track 297° to PONOD
Cross PONOD AT or ABV 4000ft
- Track 297° to ENTOX
MAX IAS 230KT AT ENTOX
- Turn LEFT, track 291° to VATRO
Cross VATRO AT 3000ft
- Turn RIGHT, track 338° to PULEX
- Turn RIGHT, track 017° to GLENN for ILS,
RNP Z, LOC or RNP T RWY 01R approach
MAX IAS 185KT AT GLENN

RWY 19L:

- From GOMOL, track 339° to MEKUG
- Track 339° to SALEL
Cross SALEL BTN 9000ft and FL120
- Turn RIGHT, track 351° to SALGA
Cross SALGA AT 9000ft
- Track 351° to ISPON
- Turn LEFT, track 309° to OMGUV
Cross OMGUV AT or ABV 5000ft
MAX IAS 230KT AT OMGUV
- Turn LEFT, track 315° to SURSI
- Turn LEFT, track 309° to MEKUG for ILS,
RNP Z, LOC or RNP T RWY 19L approach
MAX IAS 185KT AT BETSO

**COMMUNICATIONS FAILURE: PROCEDURE IN IMC
IF ABLE CTC BN ATC ON TEL: (07) 3866-3694**

- Squawk 7600, comply with vertical navigation requirements, but not below MSA.
- Track via the latest STAR clearance to the nominated runway, then fly the most suitable approach in accordance with ERSA EMERG Section 1.5.

Changes: PROC NR, RNP T RWY 01R/19L.

BBNSR48-178