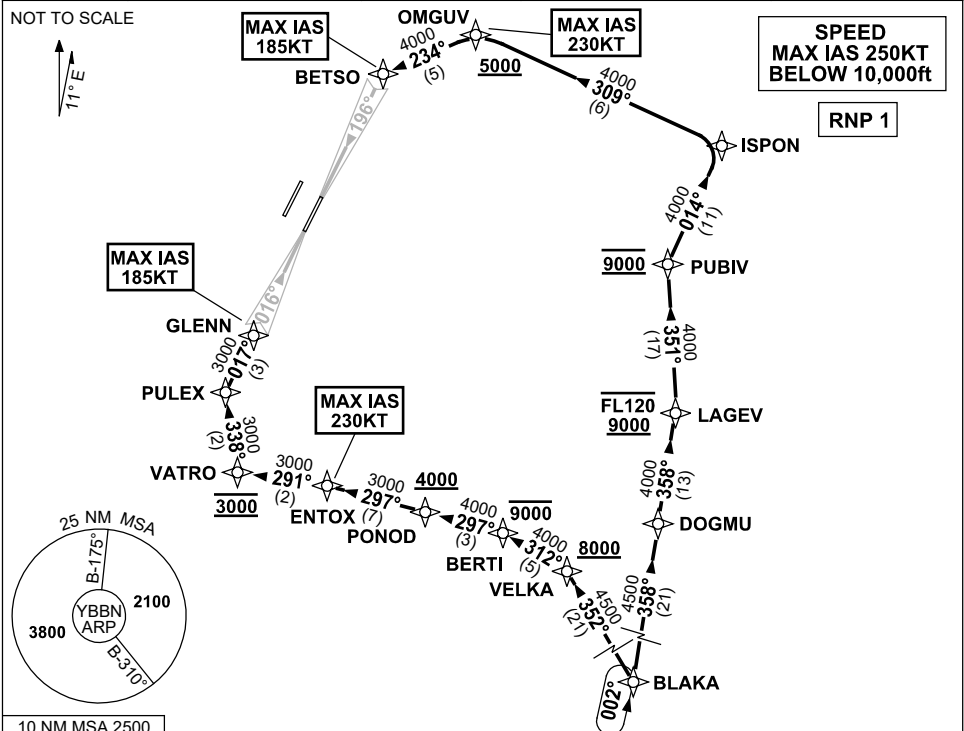


**STANDARD INSTRUMENT ARRIVAL (STAR)  
BLAKA FIVE ALPHA ARRIVAL (RNAV) RWY 01R/19L  
BRISBANE, QLD (YBBN)**

**21 MAR 2024**

ATIS 113.2 125.5	APP NORTH 124.7 SOUTH 125.6 FINALS 119.25	TWR 01R/19L 120.5 01L/19R 118.0	SMC DOM 121.7 SOUTH 122.25	Bearings are Magnetic Elevations in FEET AMSL
---------------------	--	---------------------------------------	----------------------------------	--



- ARRIVAL: BLAKA FIVE ALPHA**
- RWY 01R:**
- From BLAKA, track 352° to VELKA  
**Cross** VELKA AT or ABV 8000ft
  - Turn LEFT, track 312° to BERTI  
**Cross** BERTI AT or BLW 9000ft
  - Turn LEFT, track 297° to PONOD  
**Cross** PONOD AT or ABV 4000ft
  - Track 297° to ENTOX  
MAX IAS 230KT AT ENTOX
  - Turn LEFT, track 291° to VATRO  
**Cross** VATRO AT 3000FT
  - Turn RIGHT, track 338° to PULEX
  - Turn RIGHT, track 017° to GLENN for ILS,  
RNP Z, LOC or RNP T RWY 01R approach  
MAX IAS 185KT AT GLENN

- RWY 19L:**
- From BLAKA, track 358° to DOGMU
  - Track 358° to LAGEV  
**Cross** LAGEV BTN 9000ft and FL120
  - Turn LEFT, track 351° to PUBIV  
**Cross** PUBIV AT 9000ft
  - Turn RIGHT, track 014° to ISPON
  - Turn LEFT, track 309° to OMGUV  
**Cross** OMGUV AT or ABV 5000ft  
MAX IAS 230KT AT OMGUV
  - Turn LEFT, track 234° to BETSO for ILS,  
RNP Z, LOC or RNP T RWY 19L approach  
MAX IAS 185KT AT BETSO

**COMMUNICATIONS FAILURE: PROCEDURE IN IMC  
IF ABLE CTC BN ATC ON TEL: (07) 3866-3694**

- Squawk 7600, comply with vertical navigation requirements, but not below MSA.
- Track via the latest STAR clearance to the nominated runway, then fly the most suitable approach in accordance with ERSA EMERG Section 1.5.

Changes: PROC NR, RNP T RWY 01R/19L.

BBNSR46-178