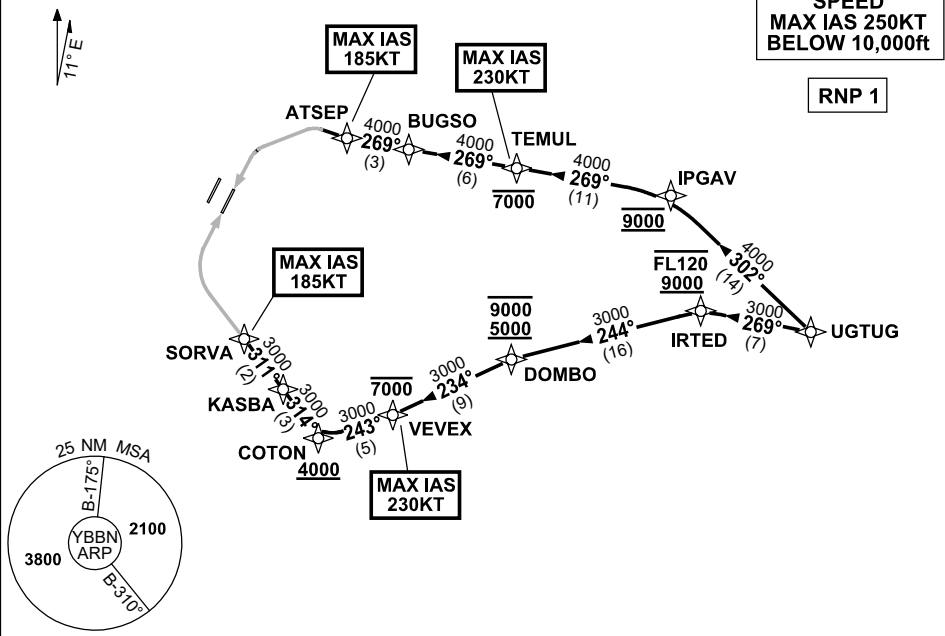


**STANDARD INSTRUMENT ARRIVAL (STAR)
UGTUG TWO X-RAY ARRIVAL (RNAV) RWY 01R/19L
BRISBANE, QLD (YBBN)**

21 MAR 2024

ATIS 113.2 125.5	APP NORTH 124.7 SOUTH 125.6 FINALS 119.25	TWR 01R/19L 120.5 01L/19R 118.0	SMC DOM 121.7 SOUTH 122.25	Bearings are Magnetic Elevations in FEET AMSL
---------------------	--	---------------------------------------	----------------------------------	--

NOT TO SCALE



10 NM MSA 2500

ARRIVAL: UGTUG TWO X-RAY

RWY 01R:

- From UGTUG, track 269° to IRTED
Cross IRTED BTN 9000ft and FL120
- Turn LEFT, track 244° to DOMBO
Cross DOMBO BTN 5000ft and 9000ft
- Turn LEFT, track 234° to VEVEK
Cross VEVEK AT or BLW 7000ft
MAX IAS 230KT AT VEVEK
- Turn RIGHT, track 243° to COTON
Cross COTON AT or ABV 4000ft
- Turn RIGHT, track 314° to KASBA
- Turn LEFT, track 311° to SORVA for RNP X or RNP S RWY 01R (AR) approach
MAX IAS 185KT AT SORVA

RWY 19L:

- From UGTUG, track 302° to IPGAV
Cross IPGAV AT 9000ft
- Turn LEFT, track 269° to TEMUL
Cross TEMUL AT or BLW 7000ft
MAX IAS 230KT AT TEMUL
- Track 269° to BUGSO
- Track 269° to ATSEP for RNP X or RNP S RWY 19L (AR) approach
MAX IAS 185KT AT ATSEP

**COMMUNICATIONS FAILURE: PROCEDURE IN IMC
IF ABLE CTC BN ATC ON TEL: (07) 3866-3694**

- Squawk 7600, comply with vertical navigation requirements, but not below MSA.
- Track via the latest STAR clearance to the nominated runway, then fly the most suitable approach in accordance with ERSA EMERG Section 1.5.

Changes: PROC NR, RNP S RWY 01R/19L (AR).

BBNSR45-178