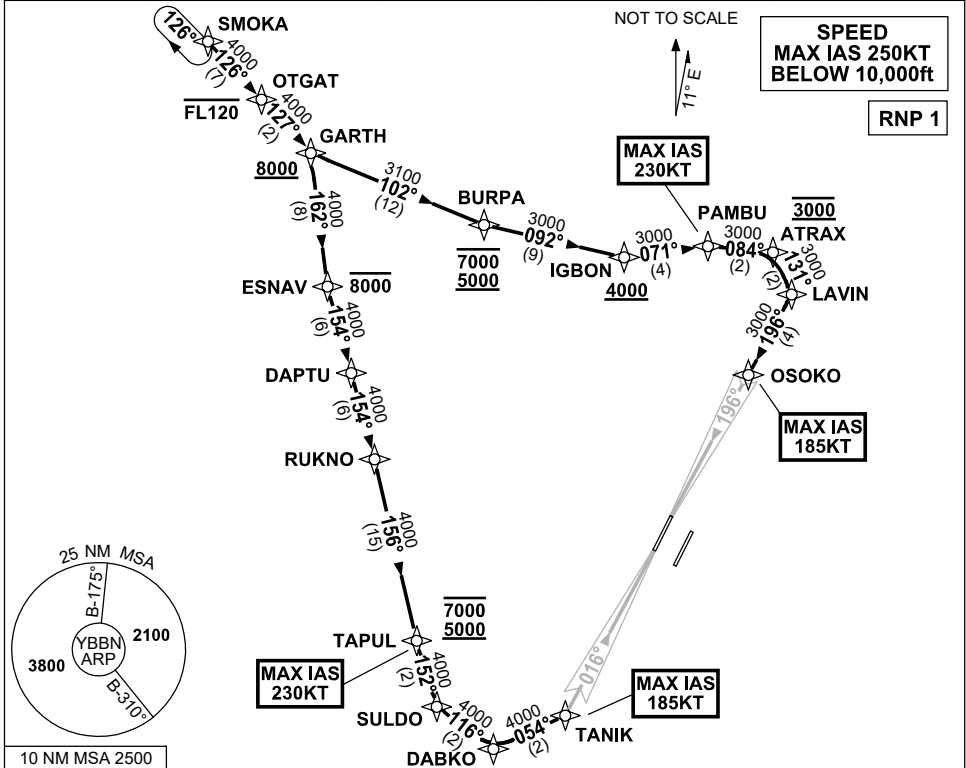


**STANDARD INSTRUMENT ARRIVAL (STAR)
SMOKA ONE ALPHA ARRIVAL (RNAV) RWY 01L/19R
BRISBANE, QLD (YBBN)**

21 MAR 2024

ATIS 113.2 125.5	APP NORTH 124.7 SOUTH 125.6 FINALS 119.25	TWR 01L/19R 118.0 01R/19L 120.5	SMC DOM 121.7 SOUTH 122.25	Bearings are Magnetic Elevations in FEET AMSL
---------------------	--	---------------------------------------	----------------------------------	--



10 NM MSA 2500

ARRIVAL: SMOKA ONE ALPHA RWY 01L:

- From SMOKA track 126° to OTGAT
Cross OTGAT AT or BLW FL120
- Track 127° to GARTH
Cross GARTH AT or ABV 8000ft
- Turn RIGHT, track 162° to ESNV
Cross ESNV AT or BLW 8000ft
- Turn LEFT, track 154° to DAPTU
- Track 154° to RUKNO
- Turn RIGHT, track 156° to TAPUL
Cross TAPUL BTN 5000ft and 7000ft
MAX IAS 230KT AT TAPUL
- Turn LEFT, track 152° to SULDO
- Turn LEFT, track 116° to DABKO
- Turn LEFT, track 054° to TANI for ILS, RNP Z or LOC RWY 01L approach
MAX IAS 185KT AT TANI

RWY 19R:

- From SMOKA track 126° TO OTGAT
Cross OTGAT AT or BLW FL120
- Track 127° to GARTH
Cross GARTH AT or ABV 8000ft
- Turn LEFT, track 102° to BURPA
Cross BURPA BTN 5000ft and 7000ft
- Turn LEFT, track 092° to IGBON
Cross IGBON AT or ABV 4000ft
- Turn LEFT, track 071° to PAMBU
MAX IAS 230KT AT PAMBU
- Turn RIGHT, track 084° to ATRAX
Cross ATRAX AT 3000ft
- Turn RIGHT, track 131° to LAVIN
- Turn RIGHT, track 196° to OSOKO for ILS, RNP Z or LOC RWY 19R approach
MAX IAS 185KT AT OSOKO

COMMUNICATIONS FAILURE: PROCEDURE IN IMC

IF ABLE CTC BN ATC ON TEL: (07) 3866-3694

- Squawk 7600, comply with vertical navigation requirements, but not below MSA.
- Track via the latest STAR clearance to the nominated runway, then fly the most suitable approach in accordance with ERSA EMERG Section 1.5.

Changes: PROC NR.

BBNSR40-178