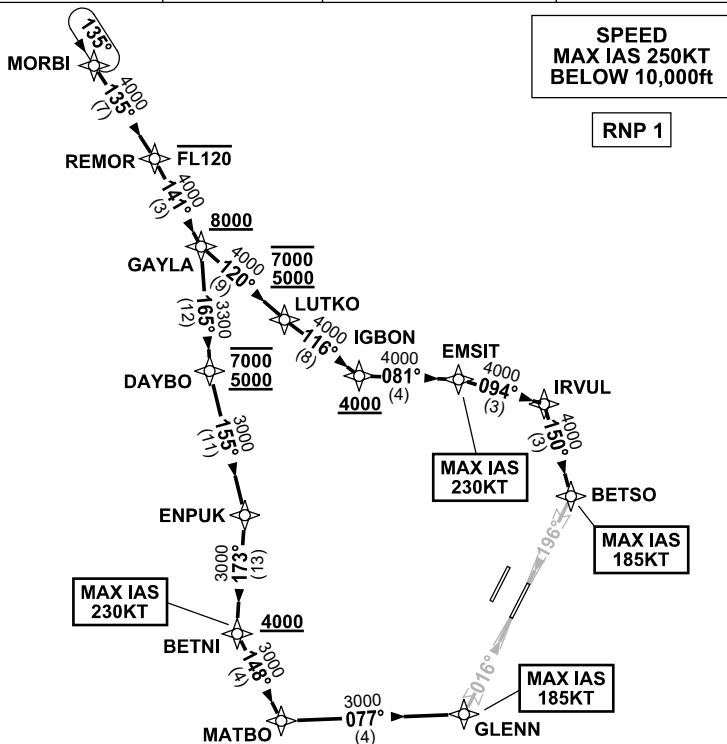
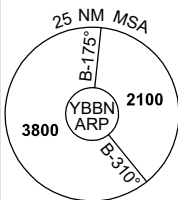


**STANDARD INSTRUMENT ARRIVAL (STAR)
MORBI TWO ALPHA ARRIVAL (RNAV) RWY 01R/19L
BRISBANE, QLD (YBBN)**

13 JUN 2024

| | | | | |
|---------------------|--|---------------------------------------|----------------------------------|--|
| ATIS 113.2 125.5 | APP NORTH 124.7 SOUTH 125.6 FINALS 119.25 | TWR 01R/19L 120.5 01L/19R 118.0 | SMC DOM 121.7 SOUTH 122.25 | Bearings are Magnetic Elevations in FEET AMSL |
|---------------------|--|---------------------------------------|----------------------------------|--|

NOT TO SCALE



ARRIVAL: MORBI TWO ALPHA

RWY 01R:

- From MORBI track 135° to REMOR
Cross REMOR AT or BLW FL120
- Turn **RIGHT**, track 141° to GAYLA
Cross GAYLA AT or ABV 8000ft
- Turn **RIGHT**, track 165° to DAYBO
Cross DAYBO BTN 5000ft and 7000ft
- Turn **LEFT**, track 155° to ENPUK
- Turn **RIGHT**, track 173° to BETNI
Cross BETNI AT or ABV 4000ft
MAX IAS 230KT AT BETNI
- Turn **LEFT**, track 148° to MATBO
- Turn **LEFT**, track 077° to GLENN for ILS,
RNP Z, LOC or RNP T RWY 01R approach
MAX IAS 185KT AT GLENN

RWY 19L:

- From MORBI track 135° to REMOR
Cross REMOR AT or BLW FL120
- Turn **RIGHT**, track 141° to GAYLA
Cross GAYLA AT or ABV 8000ft
- Turn **LEFT**, track 120° to LUTKO
Cross LUTKO BTN 5000ft and 7000ft
- Turn **LEFT**, track 116° to IGBON
Cross IGBON AT or ABV 4000ft
- Turn **LEFT**, track 081° to EMSIT
MAX IAS 230KT AT EMSIT
- Turn **RIGHT**, track 094° to IRVUL
- Turn **RIGHT**, track 150° to BETSO for ILS,
RNP Z, LOC or RNP T RWY 19L approach
MAX IAS 185KT AT BETSO

**COMMUNICATIONS FAILURE: PROCEDURE IN IMC
IF ABLE CTC BN ATC ON TEL: (07) 3866-3694**

- Squawk 7600, comply with vertical navigation requirements, but not below MSA.
- Track via the latest STAR clearance to the nominated runway, then fly the most suitable approach in accordance with ERSA EMERG Section 1.5.

Changes: RWY 19L TEXT CORRECTION.

BBNSR36-179