

**STANDARD INSTRUMENT ARRIVAL (STAR)  
MORBI TWO ALPHA ARRIVAL (RNAV) RWY 01L/19R  
BRISBANE, QLD (YBBN)**

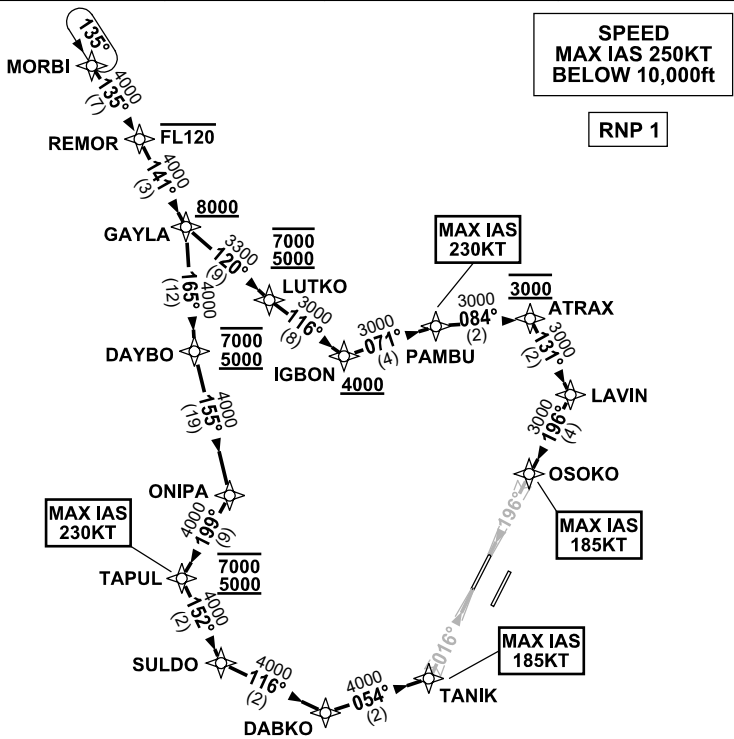
21 MAR 2024

ATIS 113.2 125.5	APP NORTH 124.7 SOUTH 125.6 FINALS 119.25	TWR 01L/19R 118.0 01R/19L 120.5	SMC DOM 121.7 SOUTH 122.25	Bearings are Magnetic Elevations in FEET AMSL
---------------------	--	---------------------------------------	----------------------------------	--

NOT TO SCALE



10 NM MSA 2500



**ARRIVAL: MORBI TWO ALPHA  
RWY 01L:**

- From MORBI track 135° to REMOR  
**Cross** REMOR AT or BLW FL120
- Turn RIGHT, track 141° to GAYLA  
**Cross** GAYLA AT or ABV 8000ft
- Turn RIGHT, track 165° to DAYBO  
**Cross** DAYBO BTN 5000ft and 7000ft
- Turn LEFT, track 155° to ONIPA
- Turn RIGHT, track 199° to TAPUL  
**Cross** TAPUL BTN 5000ft and 7000ft
- Turn LEFT, track 152° to SULDO
- Turn LEFT, track 116° to DABKO
- Turn LEFT, track 054° to TANIK for ILS,  
RNP Z or LOC RWY 01L approach  
MAX IAS 185KT AT TANIK

**RWY 19R:**

- From MORBI track 135° to REMOR  
**Cross** REMOR AT or BLW FL120
- Turn RIGHT, track 141° to GAYLA  
**Cross** GAYLA AT or ABV 8000ft
- Turn LEFT, track 120° to LUTKO  
**Cross** LUTKO BTN 5000ft and 7000ft
- Turn LEFT, track 116° to IGBON  
**Cross** IGBON AT or ABV 4000ft
- Turn LEFT, track 071° to PAMBU  
MAX IAS 230KT AT PAMBU
- Turn RIGHT, track 084° to ATRAX  
**Cross** ATRAX AT 3000ft
- Turn RIGHT, track 131° to LAVIN
- Turn RIGHT, track 196° to OSOKO for ILS,  
RNP Z or LOC RWY 19R approach  
MAX IAS 185KT AT OSOKO

**COMMUNICATIONS FAILURE: PROCEDURE IN IMC  
IF ABLE CTC BN ATC ON TEL: (07) 3866-3694**

- Squawk 7600, comply with vertical navigation requirements, but not below MSA.
- Track via the latest STAR clearance to the nominated runway, then fly the most suitable approach in accordance with ERSA EMERG Section 1.5.

Changes: PROC NR.

BBNSR35-178