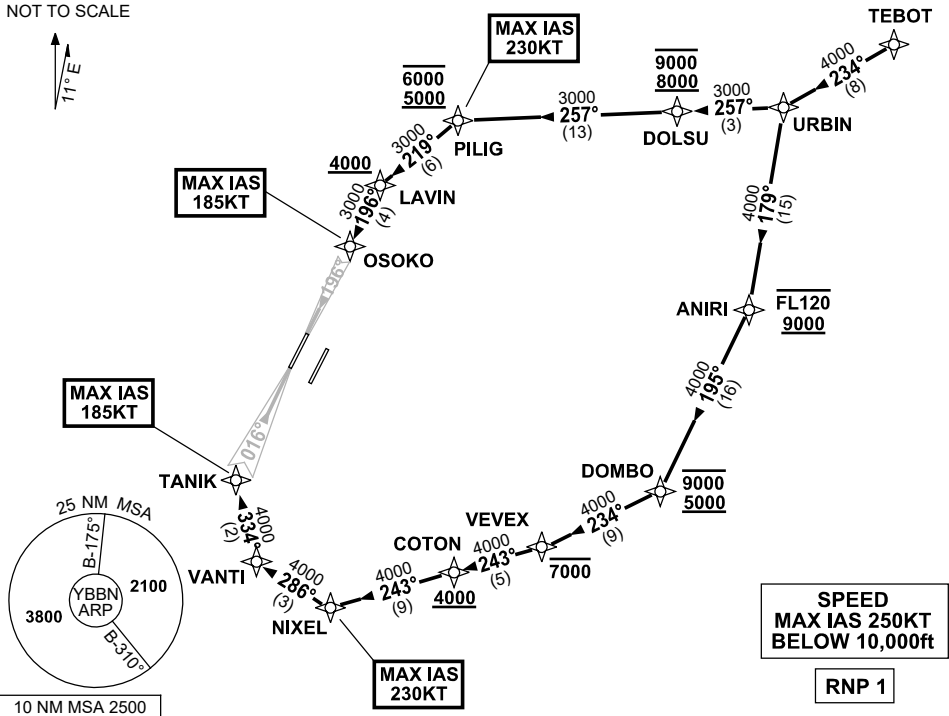


**STANDARD INSTRUMENT ARRIVAL (STAR)
TEBOT TWO ALPHA ARRIVAL (RNAV) RWY 01L/19R
BRISBANE, QLD (YBBN)**

21 MAR 2024

| | | | | |
|---------------------|--|---------------------------------------|----------------------------------|--|
| ATIS 113.2 125.5 | APP NORTH 124.7 SOUTH 125.6 FINALS 119.25 | TWR 01L/19R 118.0 01R/19L 120.5 | SMC DOM 121.7 SOUTH 122.25 | Bearings are Magnetic Elevations in FEET AMSL |
|---------------------|--|---------------------------------------|----------------------------------|--|

NOT TO SCALE



ARRIVAL: TEBOT TWO ALPHA

RWY 01L:

- From TEBOT track 234° to URBIN
- Turn LEFT, track 179° to ANIRI
Cross ANIRI BTN 9000ft AND FL120
- Turn RIGHT, track 195° to DOMBO
Cross DOMBO BTN 5000ft and 9000ft
- Turn RIGHT, track 234° to VEVEX
Cross VEVEX AT or BLW 7000ft
- Turn RIGHT, track 243° to COTON
Cross COTON AT or ABV 4000ft
- Track 243° to NIXEL
MAX IAS 230KT AT NIXEL
- Turn RIGHT, track 286° to VANTI
- Turn RIGHT, track 334° to TANIK for ILS,
RNP Z or LOC RWY 01L approach
MAX IAS 185KT AT TANIK

RWY 19R:

- From TEBOT track 234° to URBIN
- Turn RIGHT, track 257° to DOLSU
Cross DOLSU BTN 8000ft and 9000ft
- Track 257° to PILIG
Cross PILIG BTN 5000ft and 6000ft
MAX IAS 230KT AT PILIG
- Turn LEFT, track 219° to LAVIN
Cross LAVIN AT or ABV 4000ft
- Turn LEFT, track 196° to OSOKO for ILS,
RNP Z or LOC RWY 19R approach
MAX IAS 185KT AT OSOKO

**COMMUNICATIONS FAILURE: PROCEDURE IN IMC
IF ABLE CTC BN ATC ON TEL: (07) 3866-3694**

- Squawk 7600, comply with vertical navigation requirements, but not below MSA.
- Track via the latest STAR clearance to the nominated runway, then fly the most suitable approach in accordance with ERSA EMERG Section 1.5.

Changes: PROC NR.

BBNSR29-178