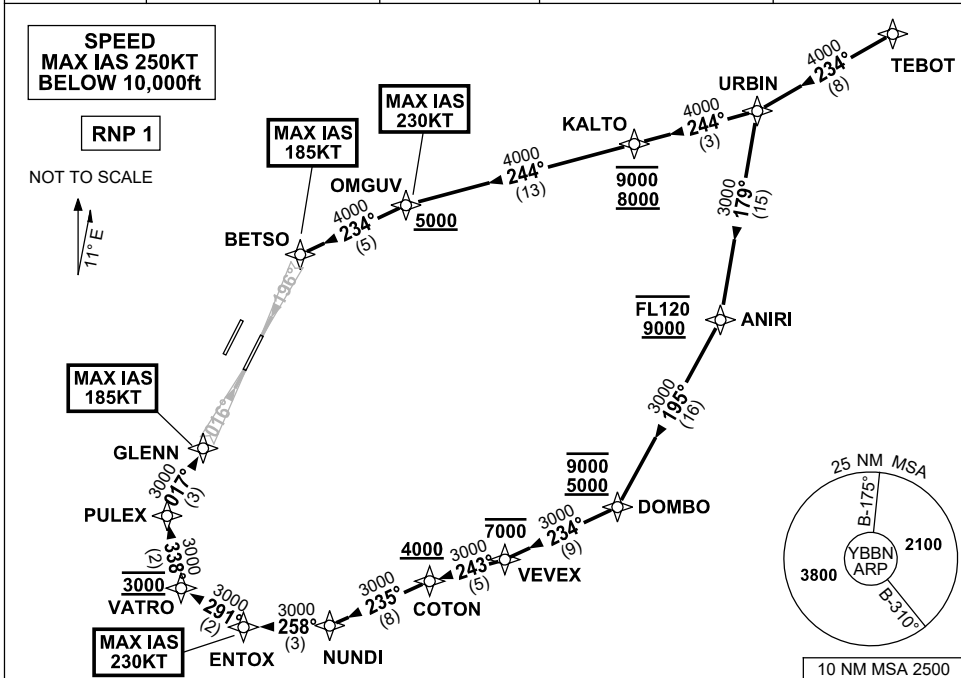


**STANDARD INSTRUMENT ARRIVAL (STAR)  
TEBOT TWO ALPHA ARRIVAL (RNAV) RWY 01R/19L  
BRISBANE, QLD (YBBN)**

21 MAR 2024

ATIS 113.2 125.5	APP NORTH 124.7 SOUTH 125.6 FINALS 119.25	TWR 01R/19L 120.5 01L/19R 118.0	SMC DOM 121.7 SOUTH 122.25	Bearings are Magnetic Elevations in FEET AMSL
---------------------	--	---------------------------------------	----------------------------------	--



**ARRIVAL: TEBOT TWO ALPHA  
RWY 01R:**

- From TEBOT track 234° to URBIN.
- Turn LEFT, track 179° to ANIRI  
**Cross ANIRI BTN 9000ft and FL120**
- Turn RIGHT, track 195° to DOMBO  
**Cross DOMBO BTN 5000ft AND 9000ft**
- Turn RIGHT, track 234° to VEVEK  
**Cross VEVEK AT or BLW 7000ft**
- Turn RIGHT, track 243° to COTON  
**Cross COTON AT or ABV 4000ft**
- Turn LEFT, track 235° to NUNDI
- Turn RIGHT, track 258° to ENTOX  
**MAX IAS 230KT AT ENTOX**
- Turn RIGHT, track 291° to VATRO  
**Cross VATRO AT 3000ft**
- Turn RIGHT, track 338° to PULEX
- Turn RIGHT, track 017° to GLENN for ILS,  
RNP Z, LOC or RNP T RWY 01R approach  
**MAX IAS 185KT AT GLENN**

**RWY 19L:**

- From TEBOT track 234° to URBIN.
- Turn RIGHT, track 244° to KALTO  
**Cross KALTO BTN 8000ft and 9000ft**
- Track 244° to OMGUV  
**Cross OMGUV AT or ABV 5000ft  
MAX IAS 230KT AT OMGUV**
- Turn LEFT, track 234° to BETSO for ILS,  
RNP Z, LOC or RNP T RWY 19L approach  
**MAX IAS 185KT AT BETSO**

**COMMUNICATIONS FAILURE: PROCEDURE IN IMC  
IF ABLE CTC BN ATC ON TEL: (07) 3866-3694**

- Squawk 7600, comply with vertical navigation requirements, but not below MSA.
- Track via the latest STAR clearance to the nominated runway, then fly the most suitable approach in accordance with ERSA EMERG Section 1.5.

Changes: RNP T RWY 01R/19L, PROC NR.

BBNSR28-178