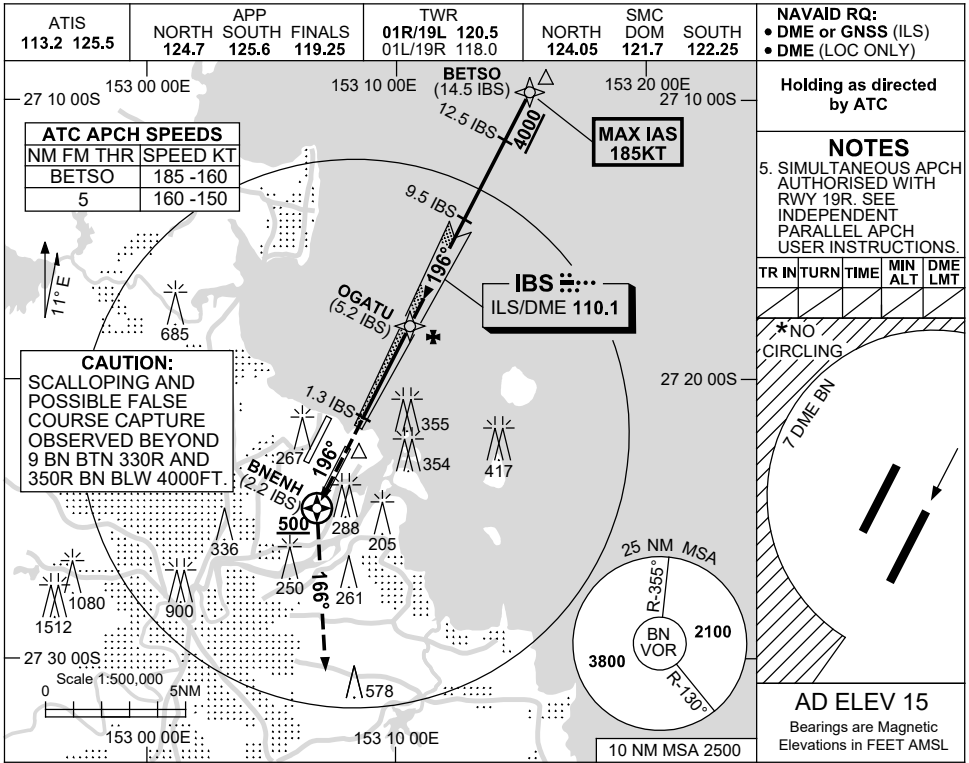


USE QNH

ILS or LOC RWY 19L
BRISBANE, QLD (YBBN)

8 SEP 2022



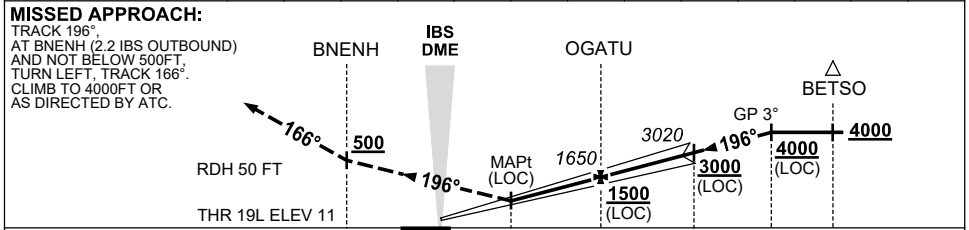
NAVREQ:
 • DME or GNSS (ILS)
 • DME (LOC ONLY)

NOTES
 5. SIMULTANEOUS APCH AUTHORIZED WITH RWY 19R. SEE INDEPENDENT PARALLEL APCH USER INSTRUCTIONS.

TR	INTURN	TIME	MIN ALT	DME LMT
*NO CIRCLING				

AD ELEV 15
 Bearings are Magnetic
 Elevations in FEET AMSL

NM TO IBS DME	1.3	2	3	4	5.2	6	7	8	9	9.5	10	11	12.5
ALT (3° APCH PATH)	430	640	960	1280	1650	1920	2240	2550	2870	3020	3190	3510	4000



NM TO IBS DME		2.2	0	1.3	5.2	9.5	12.5	14.5
NM TO THR 19L		2.3	0.20	1.1	5	9.3	12.4	14.4

CATEGORY	A		B		C		D	
	ILS	LOC	ILS	LOC	ILS	LOC	ILS	LOC
S-I ILS			220 (209)	0.8	550	RVR		
S-I LOC			430 (415-1.4)					
CIRCLING *	650 (635-2.4)		780 (765-4.0)		850 (835-5.0)			
ALTERNATE*	(1135-4.4)		(1265-6.0)		(1335-7.0)			

NOTES
 1. MAX IAS: BETSO : 185KT.
 *2. CAT D ACFT NO CIRCLING WEST OF 01R/19L BEYOND 7 DME BN.
 *3. SPECIAL ALTN MNM 700/2.5 KM.
 4. ACFT MAY BE RADAR VECTORED TO FNA.

Changes: GRID COORDS CORRECTION.

BBNII09-172