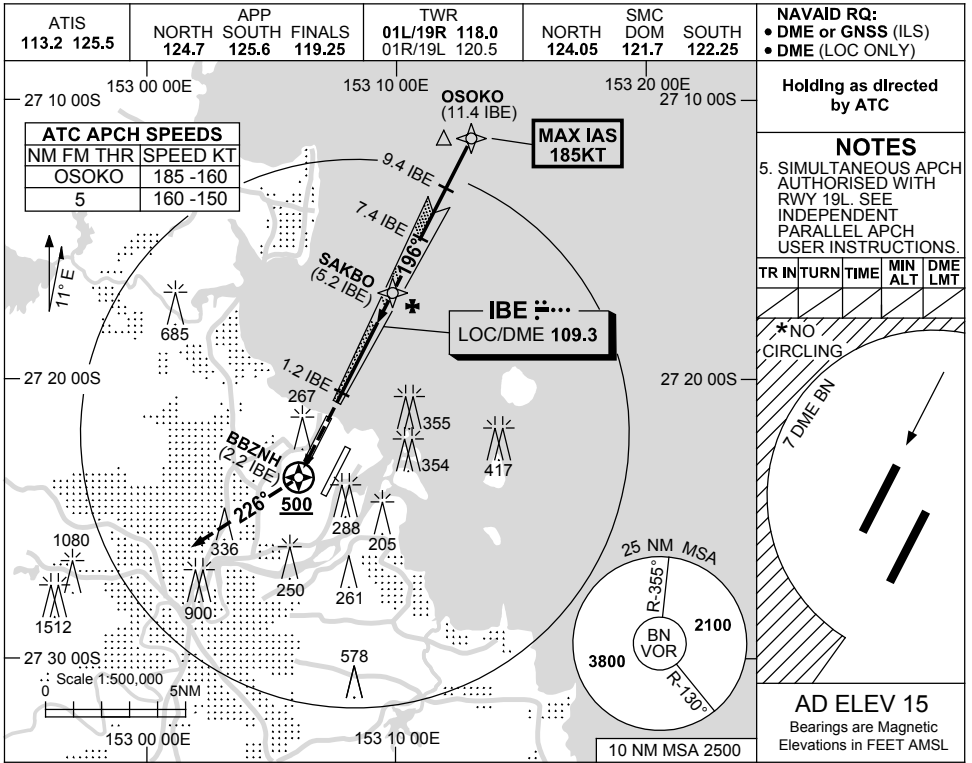


USE QNH

ILS or LOC RWY 19R
BRISBANE, QLD (YBBN)

23 MAR 2023



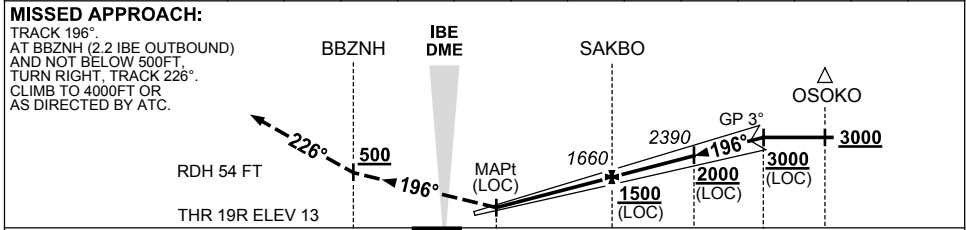
Notes:

5. SIMULTANEOUS APCH AUTHORISED WITH RWY 19L. SEE INDEPENDENT PARALLEL APCH USER INSTRUCTIONS.

TR	INT	TURN	TIME	MIN ALT	DME LMT
*NO CIRCLING					

AD ELEV 15
 Bearings are Magnetic
 Elevations in FEET AMSL

NM TO IBE DME	1.3	2	3	4	5.2	6	7.4	8	9.4			
ALT (3° APCH PATH)	430	640	960	1280	1660	1920	2390	2550	3000			



NM TO IBE DME		2.2	0	1.2	5.2	7.4	9.4	11.4	
NM TO THR 19R		2.3	0.20	1	5	7.3	9.2	11.2	

CATEGORY	A	B	C	D
S-I ILS		220 (207) 0.8		550 RVR
S-I LOC		430 (415-1.6)		
CIRCLING *	650 (635-2.4)		780 (765-4.0)	850 (835-5.0)
ALTERNATE ‡	(1135-4.4)		(1265-6.0)	(1335-7.0)

NOTES

- MAX IAS: OSOKO : 185KT.
- CAT D ACFT NO CIRCLING WEST OF 01R/19L BEYOND 7 DME BN.
- SPECIAL ALTN MNM 700/2.5 KM.
- ACFT MAY BE RADAR VECTORED TO FNA.

Changes: VIS MINIMA.

BBNII07-174