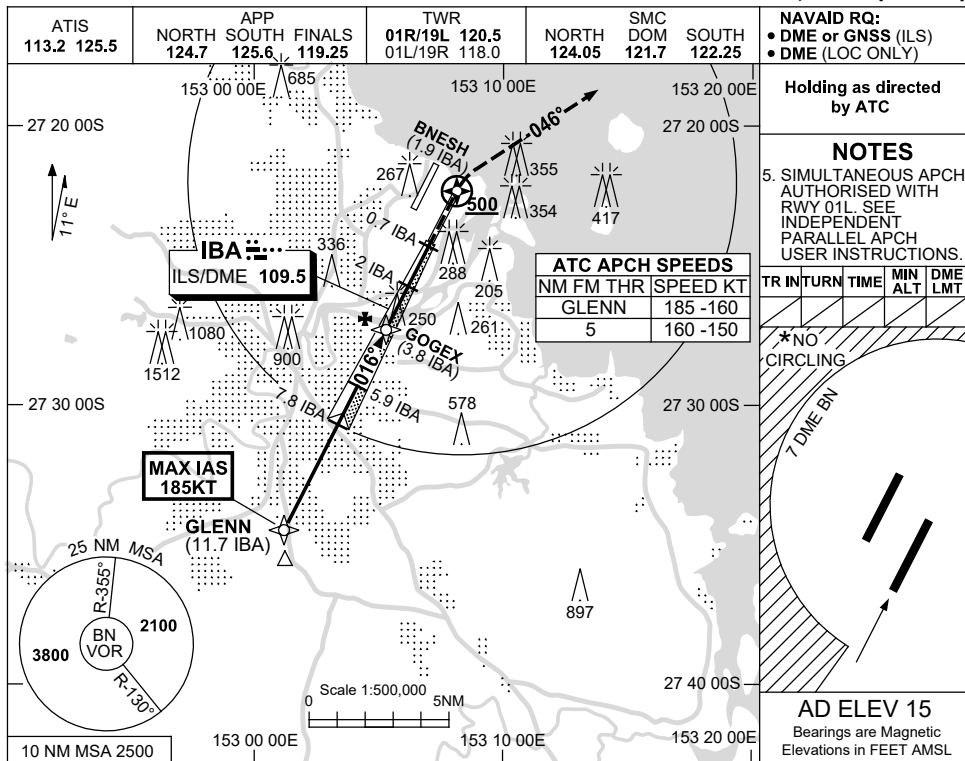


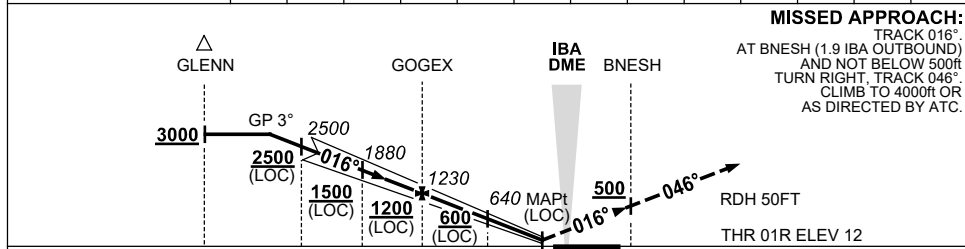
USE QNH

ILS or LOC RWY 01R
BRISBANE, QLD (YBBN)

21 MAR 2024



NM TO IBA DME	9.4	9	7.8	7	6	5.9	5	3.8	3	2	1.6		
ALT (3° APCH PATH)	3000	2870	2500	2240	1920	1880	1600	1230	960	640	520		



NM TO IBA DME	11.7	7.8	5.9	3.8	2	0.7	0	1.9
NM TO THR 01R	11.5	7.6	5.7	3.7	1.9	0.5	0	2.1

MISSED APPROACH:
 TRACK 016°
 AT BNESH (1.9 IBA OUTBOUND)
 AND NOT BELOW 500ft
 TURN RIGHT, TRACK 046°
 CLIMB TO 4000ft OR
 AS DIRECTED BY ATC.

CATEGORY	A	B	C	D
S-I ILS		220 (208-0.8)	550 RVR	
S-I LOC		520 (505-2.0)		
CIRCLING *	650 (635-2.4)		780 (765-4.0)	850 (835-5.0)
ALTERNATE ‡	(1135-4.4)		(1265-6.0)	(1335-7.0)

- NOTES**
- MAX IAS:
GLENN : 185KT.
 - * CAT D ACFT NO CIRCLING WEST OF 01R/19L BEYOND 7 DME BN.
 - ‡ SPECIAL ALTN MNM 700/2.5 KM.
 4. ACFT MAY BE RADAR VECTORED TO FNA.

Changes: 2NM STEP DOWN FIX, Editorial.

BBNII05-178